



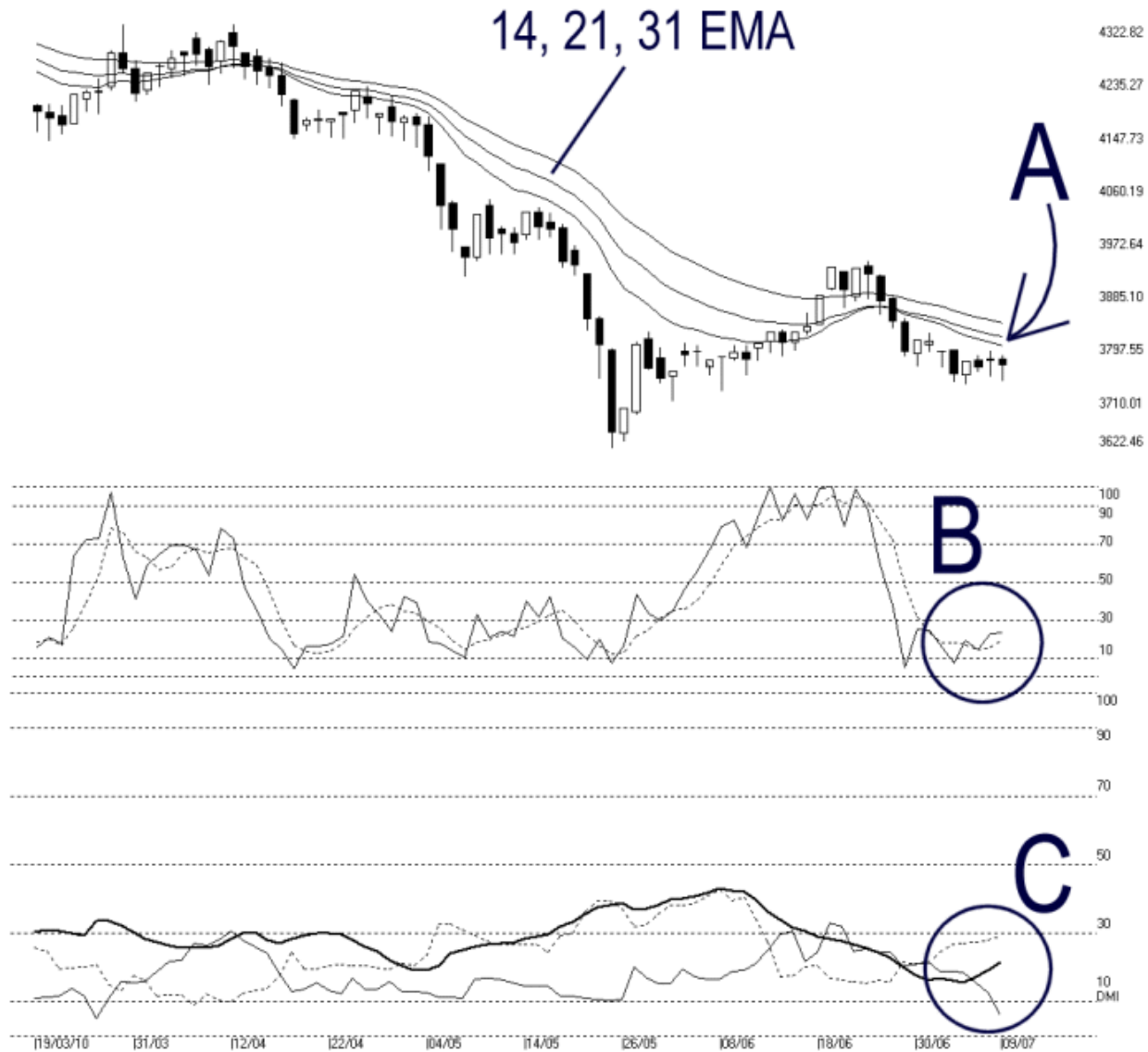
Straits Index (M) Sdn Bhd.
WinChart Technical Analysis
Tel: (03) 8941 6828
Fax: (03) 8941 9828



email: info@straitsindex.com

FBMACE Index Technical Analysis, 09/07/2010, by Straits Index (M) Sdn Bhd

Open: 3769.880 High: 3775.340 Low: 3734.040 Close: 3761.730 -8.120(-0.2%) Volume:
FBM-MDQ [FBMACE] 19/03/2010 - 09/07/2010 Ticks=80 (Indices) Moving Averages e[14,21,31] 3793.766, 3807.39, 3830.443 - STC(9,3) %K=23.14, %D=19.56 (3.5
Created with WinChart (TM) Copyright (C) Straits Index (M) Sdn Bhd



On Friday, the FBMACE ended 8.12 points or 0.2% lower. As indicated by A, the 14, 21, 31 EMA is still serving as the dynamic resistance, and the immediate technical outlook remains weak. Support for the FBMACE is still at 3622.46 WinChart Automatic Fibonacci Retracement while the resistance stays at 3892.81 WinChart Automatic Fibonacci Retracement.

Meanwhile, the Bollinger Bands contracted 29%, suggesting that the FBMACE is still consolidating. We have to wait until the re-expansion of the Bollinger Bands to determine the new direction of the

FBMACE.

As circled at B, the Stochastic failed to break above 30%, thus showing the short term bearish signal. This suggests that the short term movement of the FBMACE is still weak.

As shown on C, the DMI is showing a bearish trend signal, as the ADX is rising together with the -DI line. This suggests that the recent fluctuation of price is mostly on the lower side, and if the -DI should keep rising with the ADX line, the FBMACE is expected to trend down further.

In conclusion, after consolidating in sideways manner for almost 1 week, the FBMACE has not broken above the 14, 21, 31 EMA, thus the immediate technical outlook for the FBMACE remains weak. If the Bollinger Bands should re-expands, with the FBMACE below the Bollinger Middle Band, more downside biased movement is expected.

© 2010 Straits Index (M) Sdn Bhd

www.straitsindex.com

WinChart – Designed by investor for investors, since 1998