



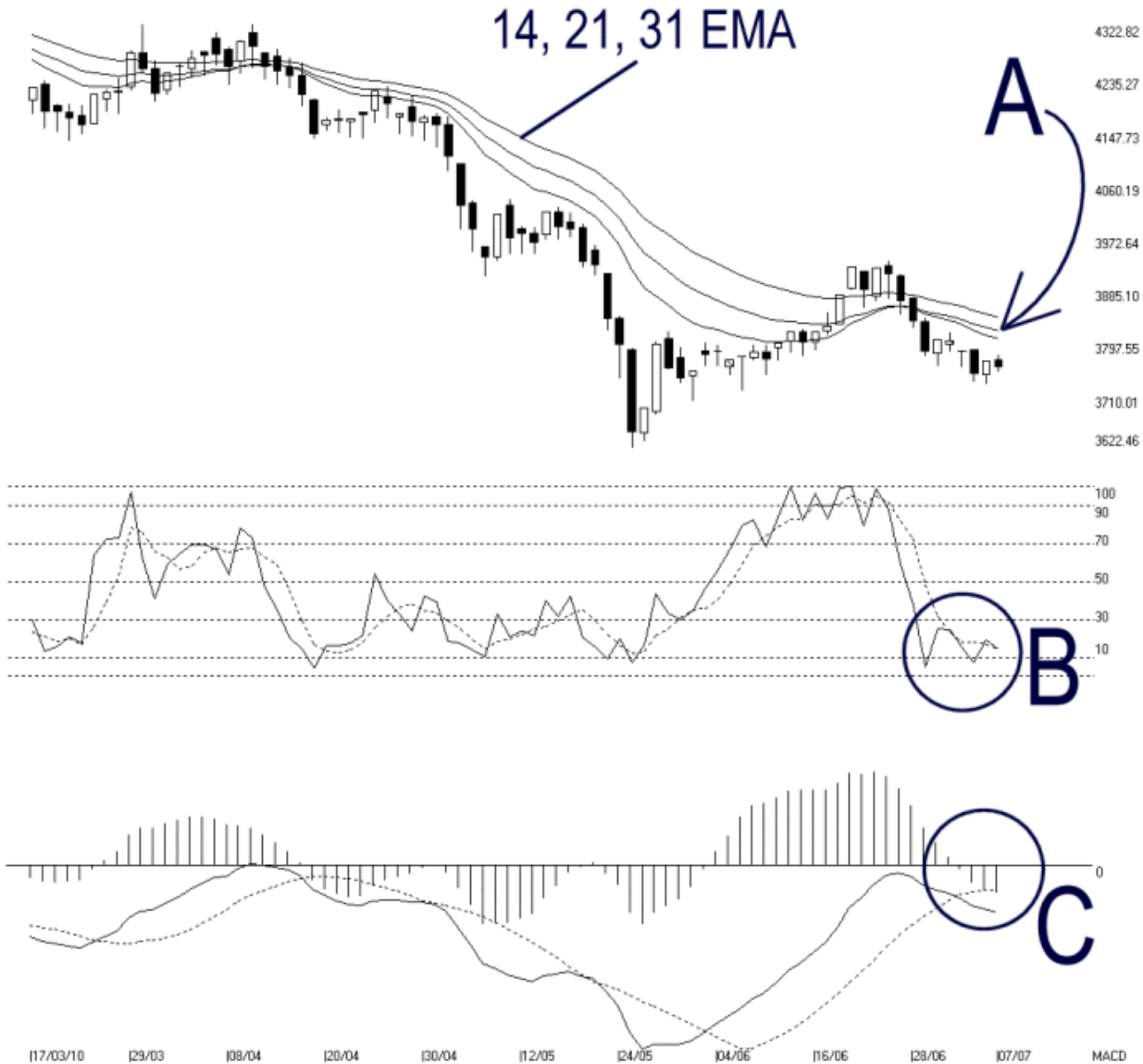
Straits Index (M) Sdn Bhd.
WinChart Technical Analysis
Tel: (03) 8941 6828
Fax: (03) 8941 9828



email: info@straitsindex.com

FBMACE Index Technical Analysis, 07/07/2010, by Straits Index (M) Sdn Bhd

Open: 3768.160 High: 3775.380 Low: 3748.690 Close: 3757.370 -9.630(-0.32%) Volume:
FBM-MDQ [FBMACE] 17/03/2010 - 07/07/2010 Ticks=80 (Indices) Moving Averages e[14,21,31] 3803.133, 3816.167, 3839.366 - STC[9,3] %K=14.39, %D=14.23 (0)
Created with WinChart (TM) Copyright (C) Straits Index (M) Sdn Bhd



On Wednesday, the FBMACE rebounded 9.63 points or 0.3%, to close at 3757.37 points. As indicated by A, the 14, 21, 31 EMA is still serving as a dynamic resistance for the FBMACE, while the support remains at 3622.46 WinChart Automatic Fibonacci Retracement and the resistance stands at 3892.81 WinChart Automatic Fibonacci Retracement.

Meanwhile, the Bollinger Bands only expanded 1%, thus this is insignificant for any signals. Nevertheless, with the FBMACE below the Bollinger Middle Band, the immediate technical outlook

remains weak.

As circled at B, the Stochastic remains below 30%, in the short term bearish territory. Therefore, this suggests that the short term movement of the FBMAE is still weak.

As circled at C, the MACD has not formed a Rounding Bottom, thus suggesting that the FBMAE is still losing strength. Meanwhile, the MACD line remains below the zero level, and still falling. This shows that the mid to longer term movement of the FBMAE is also weak.

In conclusion, the FBMAE is basically consolidating with bearish biased, as it is resisted by the Bollinger Middle Band as well as the 14, 21, 31 EMA. Coupled with the negative performance of the markets abroad, the technical outlook for the FBMAE shall remain bearish biased.

© 2010 Straits Index (M) Sdn Bhd

www.straitsindex.com

WinChart – Designed by investor for investors, since 1998