



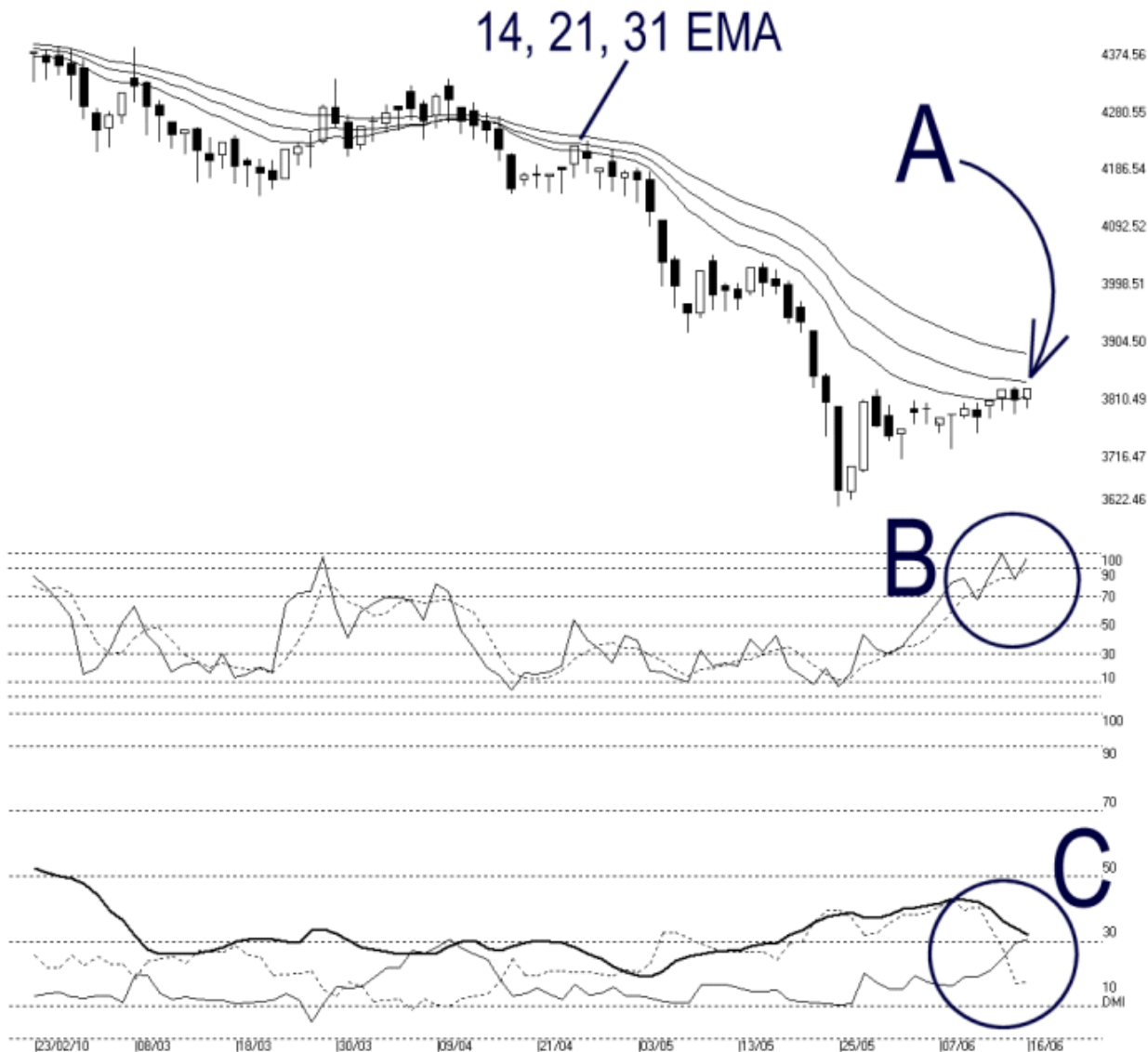
Straits Index (M) Sdn Bhd.
WinChart Technical Analysis
Tel: (03) 8941 6828
Fax: (03) 8941 9828



email: info@straitindex.com

FBMACE Index Technical Analysis, 16/06/2010, by Straits Index (M) Sdn Bhd

Open: 3799.310 High: 3815.810 Low: 3783.100 Close: 3815.810 +17.930(0.5%) Volume:
FBM-MDQ [FBMACE] 23/02/2010 - 16/06/2010 Ticks=80 (Indices) Moving Averages e(14,21,31) 3802.487, 3827.969, 3872.931 - STC(9.3) %K=96.71, %D=90.56 (6
Created with WinChart (TM) Copyright (C) Straits Index (M) Sdn Bhd



On Wednesday, the FBMACE continued its sideways movement, gaining 17.93 points or 0.5%. As indicated by A, the FBMACE is still resisted by the 14, 21, 31 EMA, thus it has not totally breaking away from the downtrend.

Meanwhile, the Bollinger Bands contracted 7%, suggesting that the FBMACE is still consolidating, and the consolidation is expected to carry on until the re-expansion of the Bollinger Bands, then the direction of the new movement shall be determined by the position of the FBMACE, above or below

the Bollinger Middle Band. Support for the FBMA CE is at 3622 level while the resistance is at 3892.81
WinChart Automatic Fibonacci Retracement.

As circled at B, the Stochastic remains above 70%, suggesting that the short term movement of the FBMA CE is still on the positive side, and the positive short term movement is expected to carry on until the Stochastic should break below 70%.

As circled at C, the +DI line of the DMI is still rising, but the ADX line is, on the other hand, falling. Therefore, it is not a bullish signal yet. Generally, when this circumstance appears, the FBMA CE is likely to move sideways.

In conclusion, the FBMA CE has not broken away from its downtrend, but with its short term movement being on the positive side, it is likely to consolidate, until the re-expansion of the Bollinger Bands.

© 2010 Straits Index (M) Sdn Bhd

www.straitsindex.com

WinChart – Designed by investor for investors, since 1998