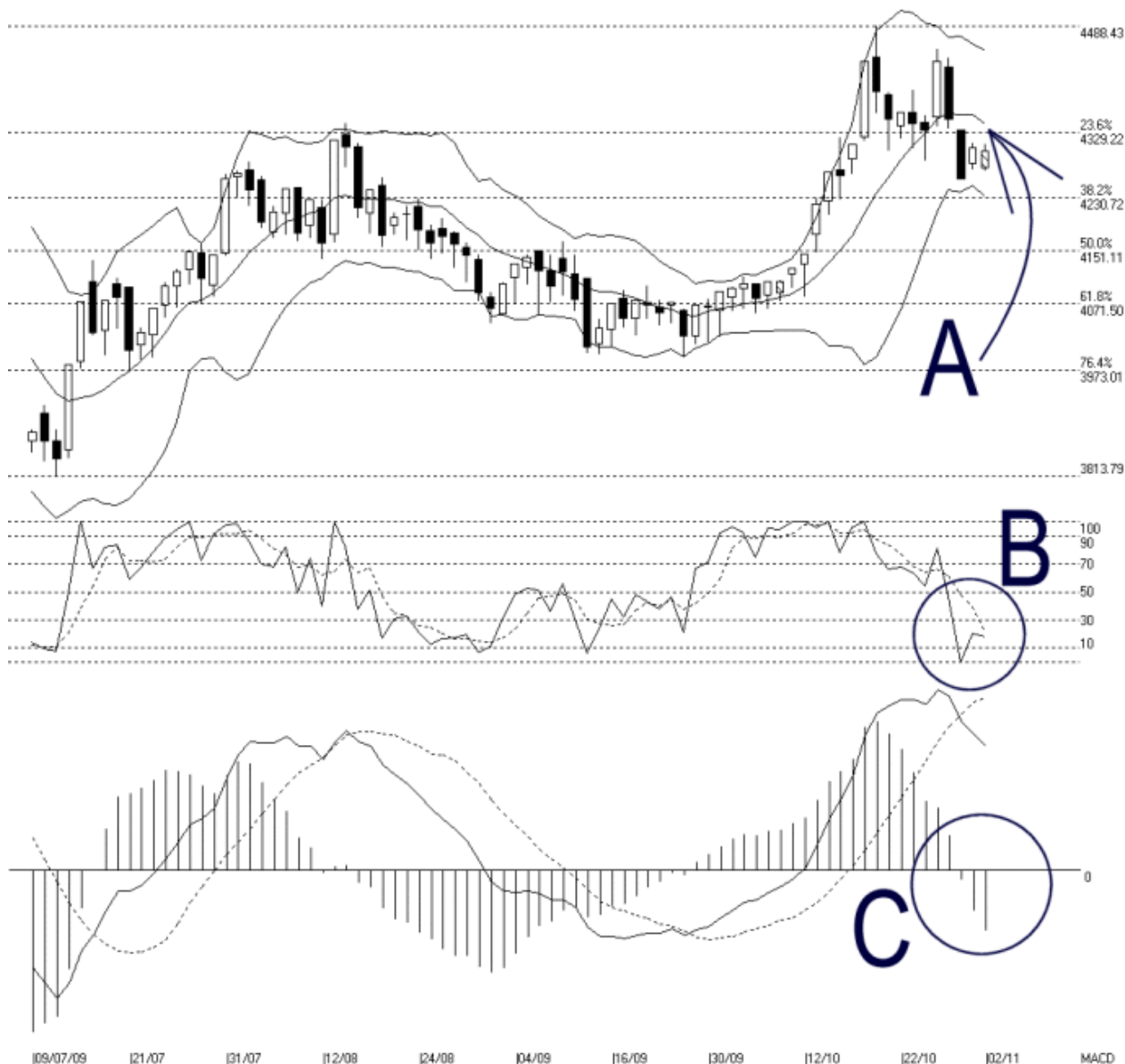




Straits Index (M) Sdn Bhd.  
WinChart Technical Analysis  
Tel: (03) 8941 6828  
Fax: (03) 8941 9828  
email: [info@straitindex.com](mailto:info@straitindex.com)



Open:4275.740 High:4310.350 Low:4270.190 Close:4300.140 -5.550(-0.1%) Volume:  
FBM-MDQ [FBMACE] 09/07/2009 - 02/11/2009 Ticks=80 { Indices } Bollinger Band(10,2) 3% - STC(9,3) %K=17.9, %D=21.96 (-4.07) Daily (Fibo) 02-11-2009 17:10:0  
Created with WinChart (TM) Copyright (C) Straits Index (M) Sdn Bhd



### FBMACE Index Technical Analysis, 02/11/2009, by Straits Index (M) Sdn Bhd

As shown on the chart above, the FBMACE ended almost unchanged, losing only 5.55 points or 0.1%. Support for the FBMACE is at 4231 WinChart Automatic Fibonacci Retracement while the resistance are found at the Bollinger Middle Band and the 4329 WinChart Automatic Fibonacci Retracement.

As indicated by A, the FBMACE is still below the Bollinger Middle Band, and therefore, the immediate outlook for the FBMACE is still bearish biased. However, since the Bollinger Bands is not really expanding yet, the FBMACE has not formed a downtrend. Nevertheless, if the Bollinger Bands should expand with the

FBMACE below the Bollinger Middle Band, more downside movement is expected for the FBMACE.

As circled at B, the Stochastic is still below 30% level, which is the short term bearish region. This suggests that the short term movement for the FBMACE is bearish biased, until the Stochastic should break above the 30% level.

As circled at C, the MACD histogram has not formed a Rounding Bottom, despite that the FBMACE has been moving sideways. Generally, the MACD histogram has to form a Rounding bottom to suggest a technical rebound for the FBMACE.

The FBMACE is still moving sideways within the 4231 and 4329 WinChart Automatic Fibonacci Retracement, and with the Bollinger Bands still has not expanding, the consolidation is likely to carry on. Nevertheless, with the FBMACE below the Bollinger Middle Band, the immediate outlook for the FBMACE is still bearish biased.

© 2009 Straits Index (M) Sdn Bhd

[www.straitsindex.com](http://www.straitsindex.com)

*WinChart – Designed by investor for investors, since 1998*