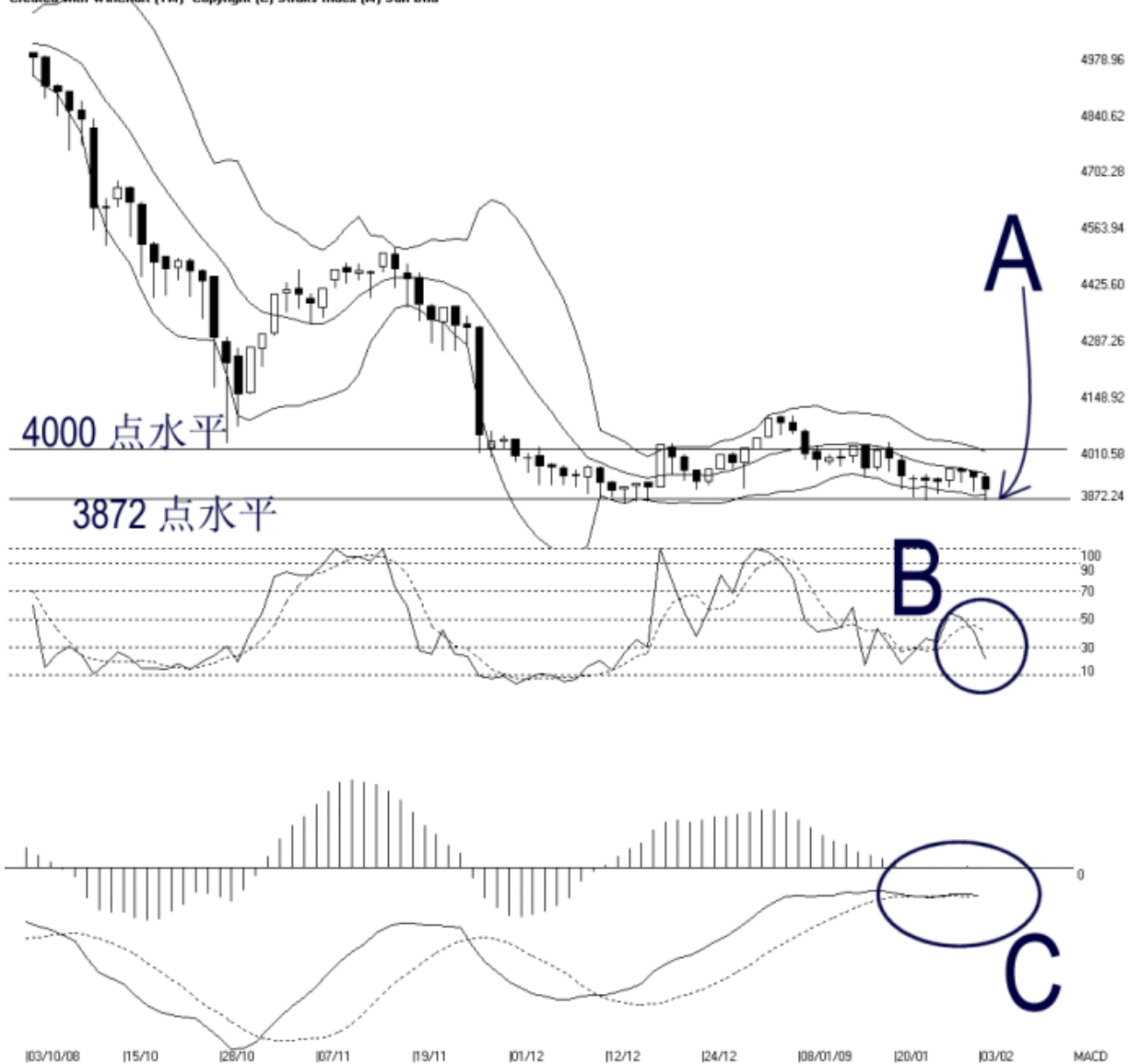


Open:3937.320 High:3945.300 Low:3877.560 Close:3907.900 -30.720(-0.8%) Volume:  
 FBM2BRD [FBM2BRD] 03/10/2008 - 03/02/2009 Ticks=80 (Indices) Bollinger Band(10,2) -11% -STC(9,3) %K=20.97 %D=42.05 (-21.08) Daily  
 Created with WinChart (TM) Copyright (C) Straits Index (M) Sdn Bhd



As circled at B, the Stochastic started falling, breaking slightly below the 30% level. If the Stochastic should continue falling, it would have entered the short term bearish region, and the market movement for the short term is likely to be bearish biased.

As circled at C, the MACD histogram has not shown any signs of a rounding bottom. This is due to the prolonged sideways movement of the FBM2nd Board Index, and therefore, during a sideways market, the Bollinger Bands Width signal is usually more reliable than any other secondary indicators.

In short, if the Bollinger Bands Width should expands with the FBM2nd Board Index below the Bollinger Middle Band, it would be a bearish biased signal for the FBM2nd Board Index. If the Bollinger Bands Width should expands with the FBM2nd Board Index above the Bollinger Middle Band, there is a chance for the FBM2nd Board Index to regains some strength.

© 2008 Straits Index (M) Sdn Bhd  
[www.straitsindex.com](http://www.straitsindex.com)

*WinChart – Designed by investor for investors, since 1998*