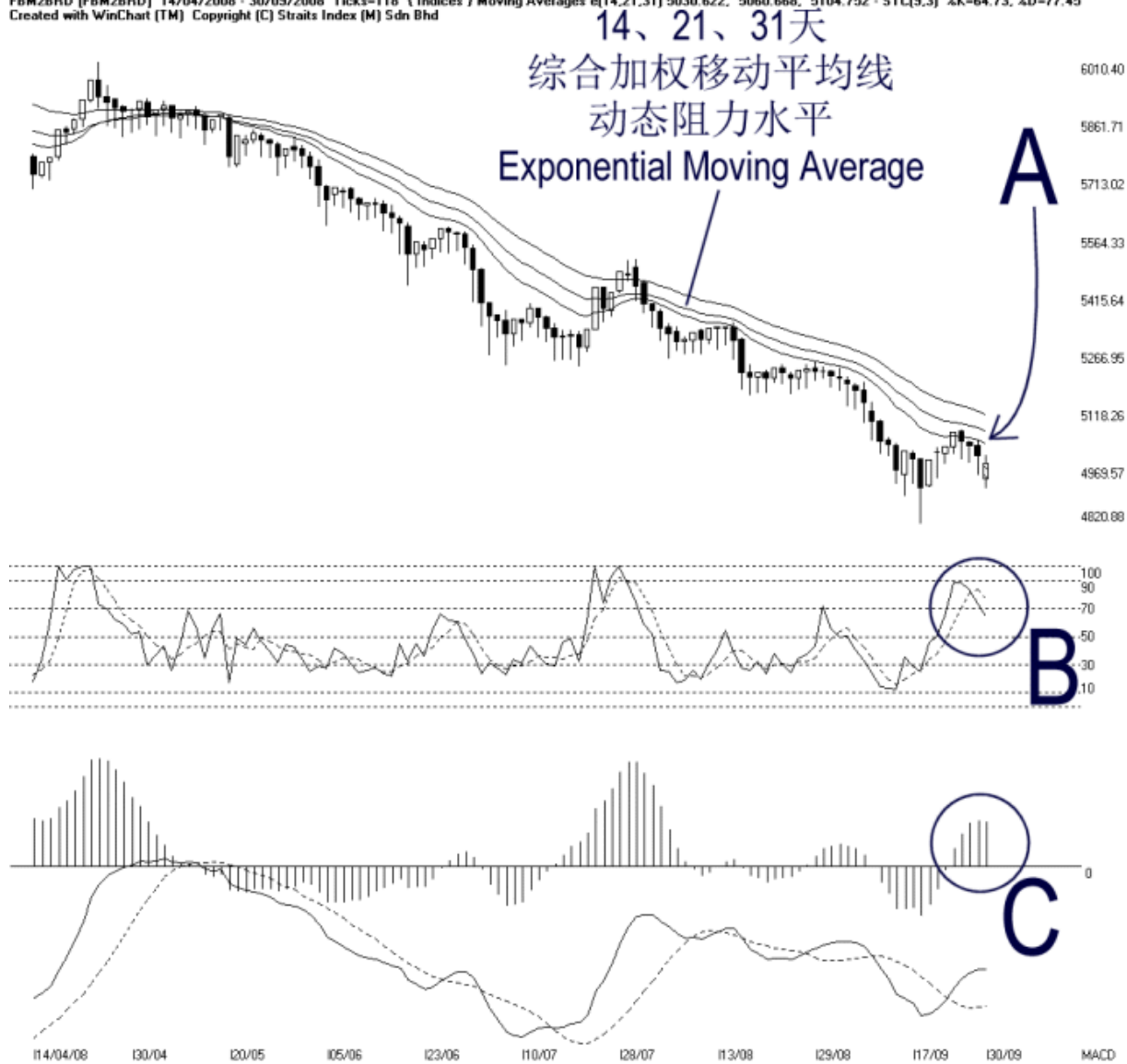


Open:4939.530 High:4999.220 Low:4913.540 Close:4978.830 -20.39(-0.4%) Volume:  
 FBM2BRD [FBM2BRD] 14/04/2008 - 30/09/2008 Ticks=118 (Indices) Moving Averages e[14,21,31] 5030.622, 5060.668, 5104.752 - STC[9,3] %K=64.73, %D=77.45  
 Created with WinChart (TM) Copyright (C) Straits Index (M) Sdn Bhd



### FBM 2<sup>nd</sup> Board Index Daily Technical Analysis 30/09/2008

The FBM2nd Board Index opened gap down at 4939.53 points on Tuesday after the over-night major losses in the US markets. However, the FBM2nd Board Index managed to fill the gap, closing only 20.39 points lower to 4978.83 points. Nevertheless, as indicated by A, the FBM2nd Board Index is still resisted by the falling dynamic resistance, which is the 14, 21, 31 EMA. Therefore, the outlook remain bearish biased, with a support remains at 4820.88 WinChart Automatic Fibonacci Retracement.

As circled at B, the Stochastic %K falls below 70% level on Tuesday; if the Stochastic %D should also break below 70% level, it would confirm an end to the short term bullish signal. If the Stochastic should break below 30% level, it would be a short term bearish signal for the FBM2nd Board Index.

As circled at C, the MACD histogram stopped rising, and therefore, there is a risk of forming a rounding top. If the MACD histogram should form a rounding top, it would be a signal suggesting a weakening short term movement for the FBM2nd Board Index, and the weakening movement is expected to continue until the MACD histogram should form a rounding bottom.

© 2008 Straits Index (M) Sdn Bhd

[www.straitsindex.com](http://www.straitsindex.com)

*WinChart – Designed by investor for investors, since 1998*