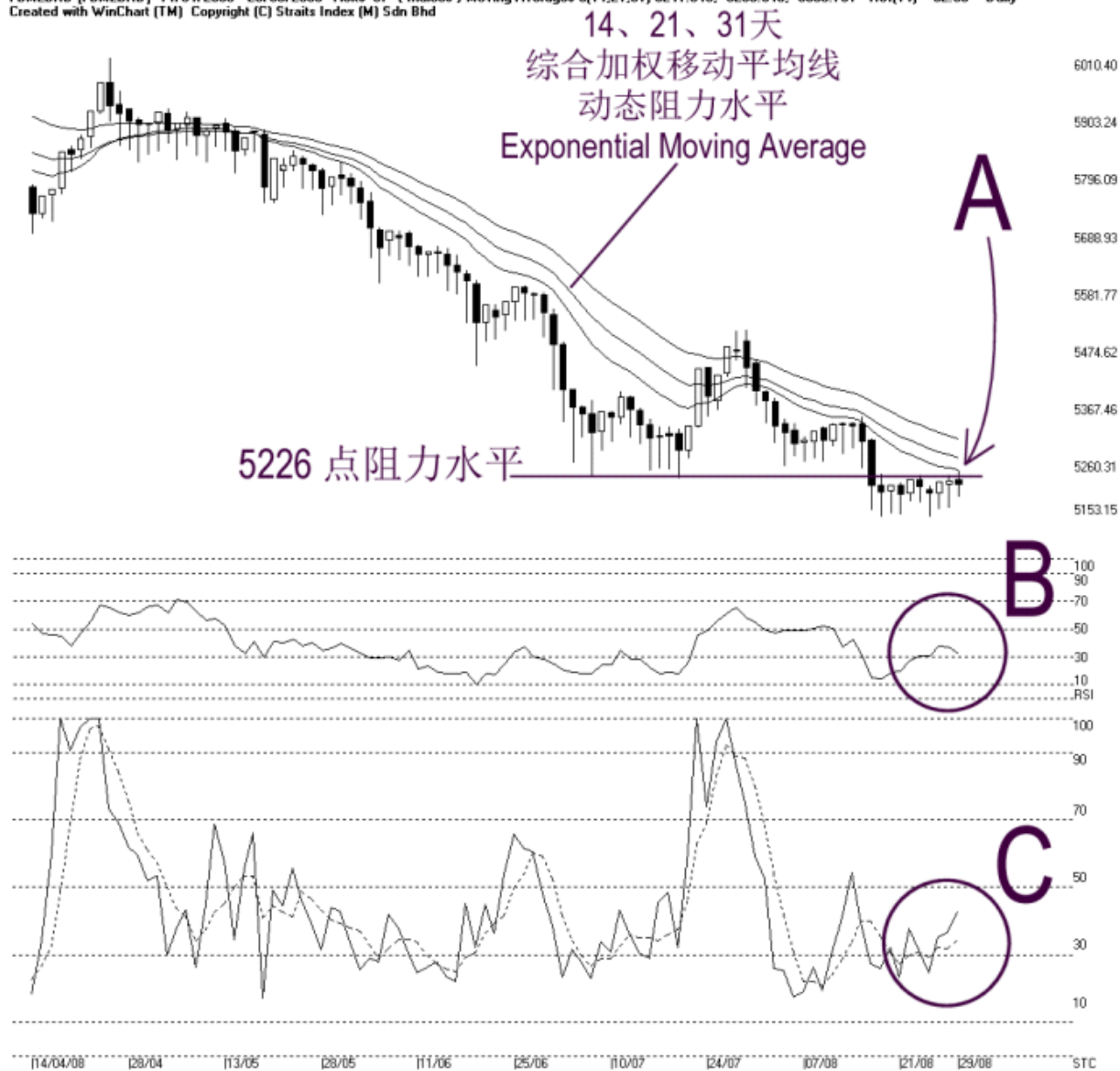


Open:5223.300 High:5241.250 Low:5191.060 Close:5216.460 -5.920(-0.1%) Volume:
 FBM2BRD [FBM2BRD] 14/04/2008 - 29/08/2008 Ticks-97 { Indices } Moving Averages e[14,21,31] 5241.846, 5265.646, 5300.731 - RSI(14) - 32.56 Daily
 Created with WinChart (TM) Copyright (C) Straits Index (M) Sdn Bhd



FBM 2nd Board Index Daily Technical Analysis 29/08/2008

Despite having an daily high reaching 5241.25 points, the FBM2nd Board Index remains resisted by the dynamic resistance (14, 21, 31 EMA) as indicated by A. This suggests that the FBM2nd Board Index downtrend remains intact, with the current support at 5153.15 WinChart Automatic Fibonacci Retracement.

As circled at B, the WinChart RSI ended slightly lower while barely staying above 30% level, this suggests that the market strength for the mid is still weak, and if the WinChart should break below the 30% level, it would be a mid term bearish signal for the FBM2nd Board Index.

As circled at C, the Stochastic rose slightly but remained below the 50% level. Generally, the Stochastic has to break above the 70% level to show a short term bullish signal. Nevertheless, if the Stochastic should break above the 50%, it would be a sign of an improving short term movement of the FBM2nd Board Index.

© 2008 Straits Index (M) Sdn Bhd

www.straitsindex.com

WinChart – Designed by investor for investors, since 1998