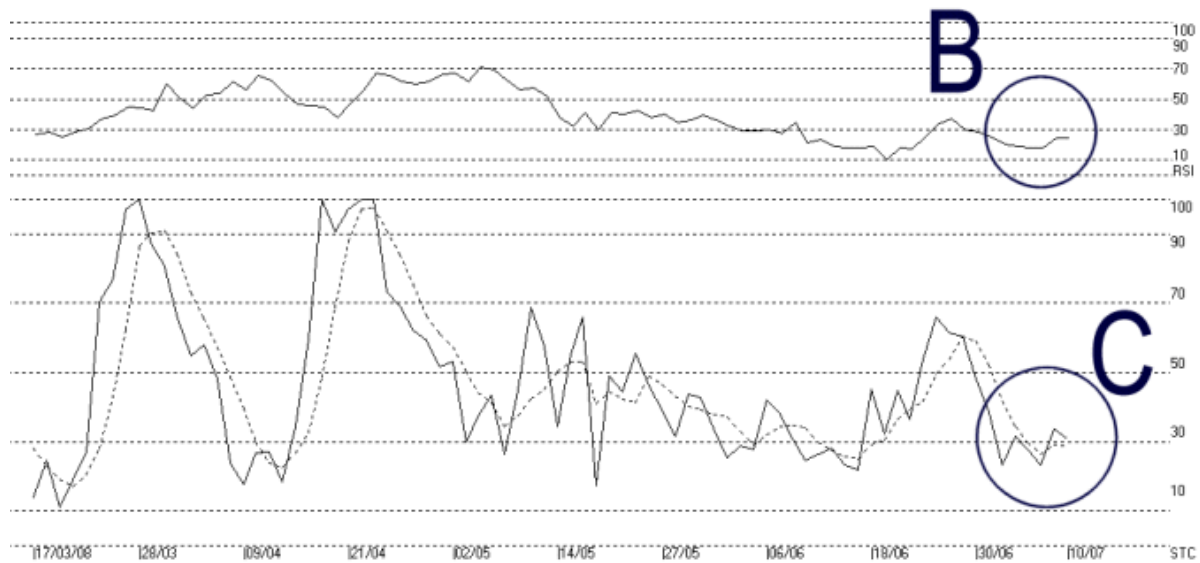
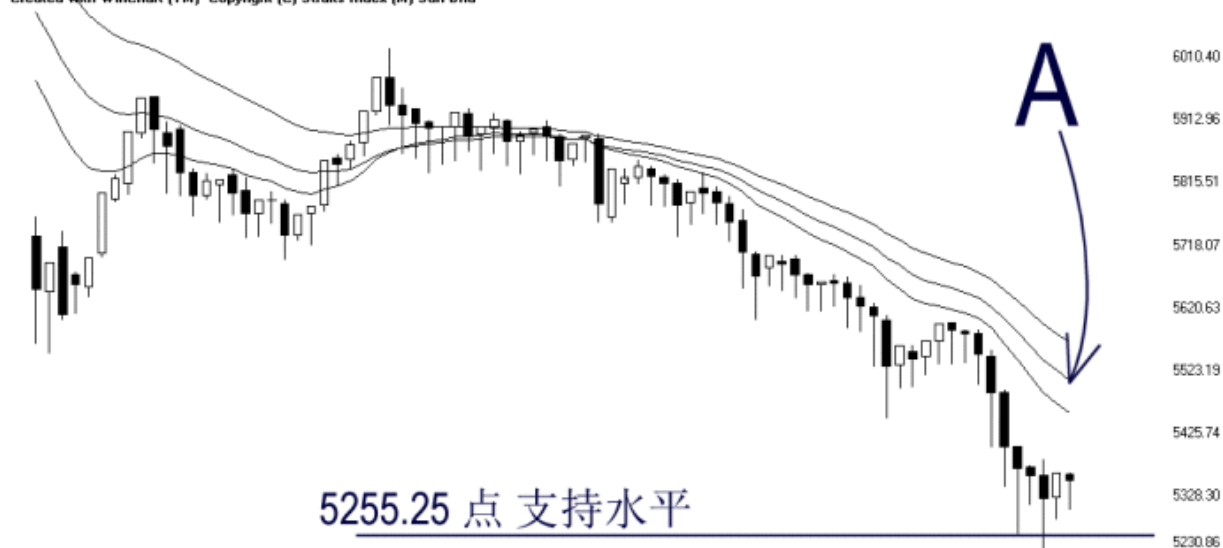


Open:5348.710 High:5350.330 Low:5293.240 Close:5340.080 -10.250(-0.2%) Volume:
 FBM2BRD (FBM2BRD) 17/03/2008 - 10/07/2008 Ticks=80 { Indices } Moving Averages e(14,21,31) 5444.108, 5495.775, 5554.27 - RSI(14) - 24.61 Daily
 Created with WinChart (TM) Copyright (C) Straits Index (M) Sdn Bhd



FBM 2nd Board Index Daily Technical Analysis 10/07/2008

On Thursday, the FBM2nd Board Index ended sideways, closing 10.25 points to 5340.08 points. Meanwhile, as indicated by A, the falling 14, 21, 31 EMA is still serving as the dynamic resistance for the FBM2nd Board Index, and therefore, any rally below the dynamic would only be considered as a technical rebound. Nevertheless, support for the FBM2nd Board Index is still at 5255.25 level.

As circled at B, the WinChart RSI remains below the 30% level, and therefore, the mid term bearish signal remains intact, and the market sentiment for the mid term is still bearish biased.

As circled at C, the Stochastic %D line failed to break above the 30% level, and did not confirm the %K line signal. Therefore, the Stochastic is still showing a short term bearish signal, and the market movement for the short term is still bearish biased.

© 2008 Straits Index (M) Sdn Bhd

www.straitsindex.com

WinChart – Designed by investor for investors, since 1998