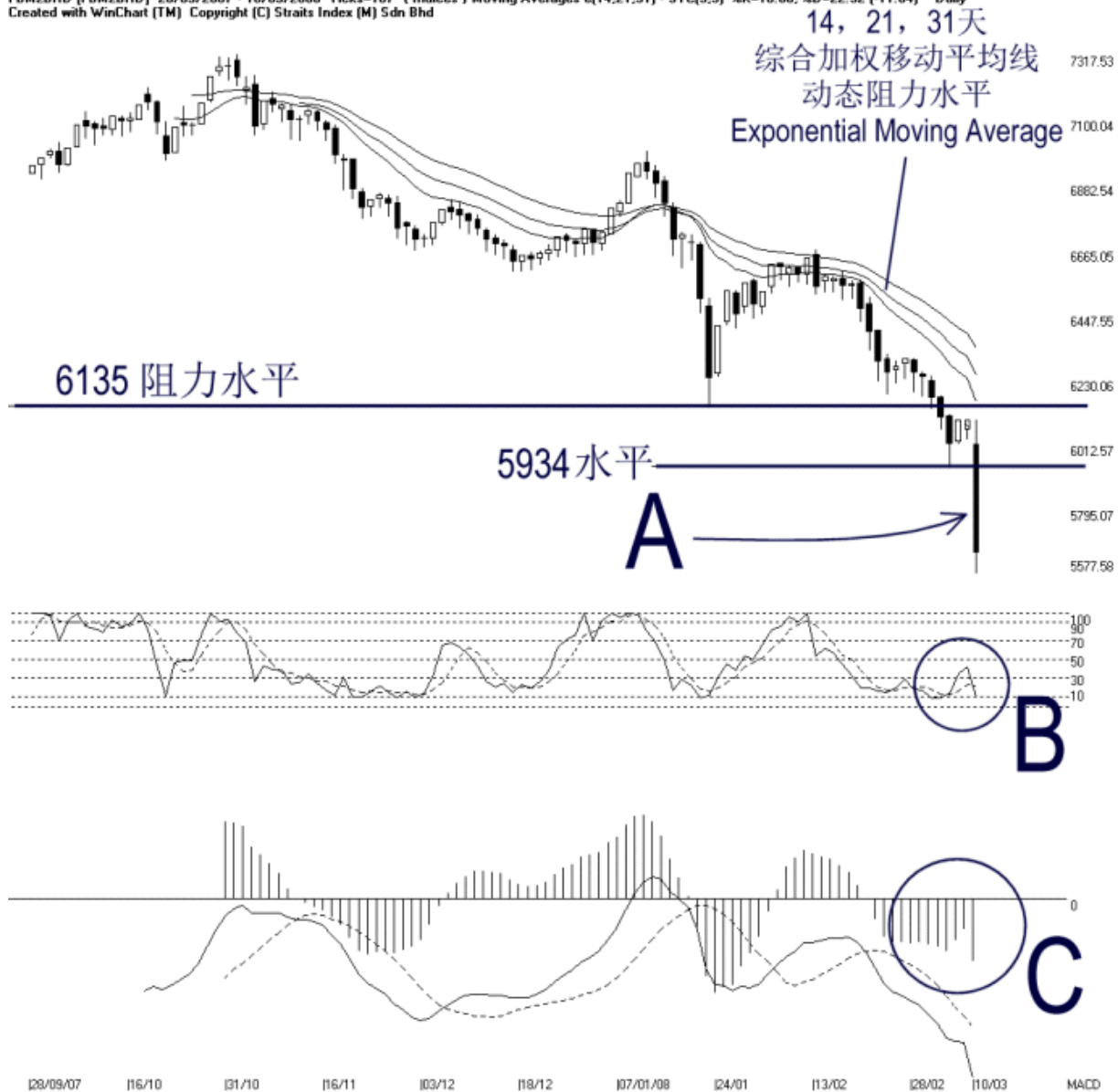


Open:6014.040 High:6094.410 Low:5577.580 Close:5654.580 -439.830(-7.2%) Volume:
FBM2BRD (FBM2BRD) 28/09/2007 - 10/03/2008 Ticks-107 (Indices) Moving Averages e(14,21,31) - STC(9,3) %K-10.68, %D-22.52 (-11.84) Daily
Created with WinChart (TM) Copyright (C) Straits Index (M) Sdn Bhd



FBM 2nd Board Index Daily Technical Analysis 10/03/2008

As indicated by A, the FBM2nd Board Index breaks below the 5934 support level, marking yet another new low at 5577.58 points before closing at 5654.58 points. Therefore, the 5934 points is now the immediate resistance for the FBM2nd Board Index. Meanwhile, the 14, 21, 31 EMA is still serving as the dynamic resistance for the FBM2nd Board Index. As long as the FBM2nd Board Index is resisted by the 14, 21, 31 EMA, the outlook for the FBM2nd Board Index shall remain bearish biased. Since the FBM2nd Board Index is making a new low, there is no reliable support at the moment.

As circled at B, the stochastic %K returned to below the 30% level on Monday, and therefore, the short term bearish signal remains intact. As long as the Stochastic is still staying below the 30% level, the market movement for the short term is at bearish biased.

As circled at C, the MACD histogram rounding bottom was violated on Monday as the FBM2nd Board Index dipped more than 7%. Therefore, this has ended the short term consolidation, and provided that the MACD histogram is still falling, it suggests that the FBM2nd Board Index is still turning weak.

© 2008 Straits Index (M) Sdn Bhd
www.straitsindex.com

WinChart – Designed by investor for investors, since 1998