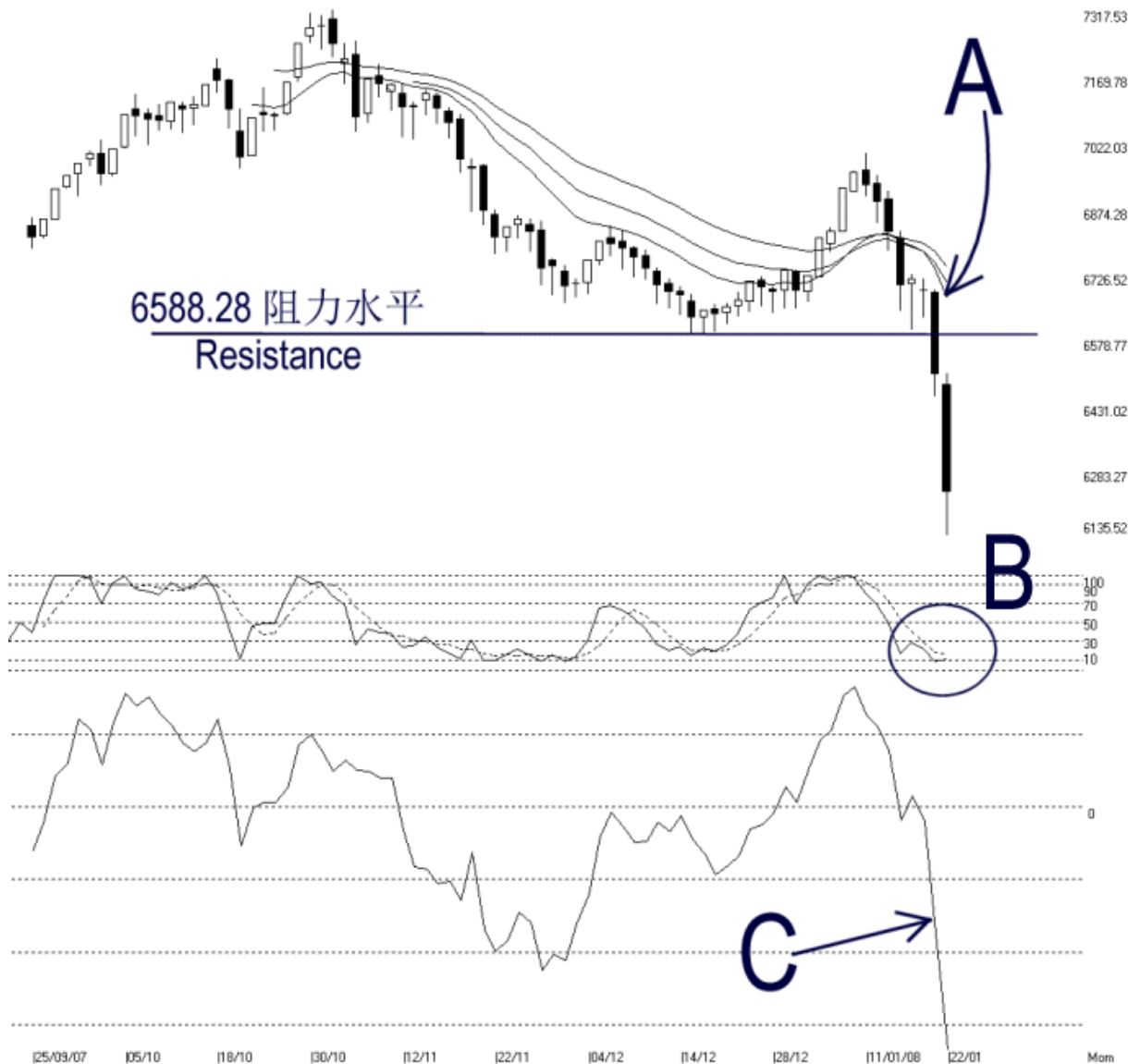




Straits Index (M) Sdn Bhd
WinChart Technical Analysis Provider
Tel : (03) 8941 6828 Fax : (03) 8941 9828
Email: info@straitindex.com



Open:6476.890 High:6500.030 Low:6135.520 Close:6236.490 -263.540(-4.1%) Volume:
FBM2BRD [FBM2BRD] 25/09/2007 - 22/01/2008 Ticks=80 (Indices) Moving Averages e[14,21,31] - STC[9,3] %K=11.74, %D=16.21 (-4.47) Daily
Created with WinChart (TM) Copyright (C) Straits Index (M) Sdn Bhd



FBM 2nd Board Index Daily Technical Analysis 22/01/2008

As shown on the chart above, the FBM2nd Board Index continued its falling movement after breaking below the 6588.28 support. Meanwhile, as indicated by A, the 14, 21, 31 EMA remain falling and serving as the dynamic resistance for the FBM2nd Board Index. Provided that the FBM2nd Board Index is still resisted by the falling dynamic, the outlook for the FBM2nd Board Index shall remain bearish biased.

As circled at B, the Stochastic remain below the 30% level, which is the short term bearish region. Therefore, if the Stochastic shall stay below the 30% level, the short term market movement for the FBM2nd Board Index is expected to be bearish biased.

As indicated by C, the momentum fall below the previous low on the 28th of Nov, 2007, suggesting that the current falling speed of the FBM2nd Board Index is faster than its rally speed. Therefore, the momentum is now suggesting a negative movement for the FBM2nd Board Index.

© 2008 Straits Index (M) Sdn Bhd
www.straitsindex.com

WinChart – Designed by investor for investors, since 1998