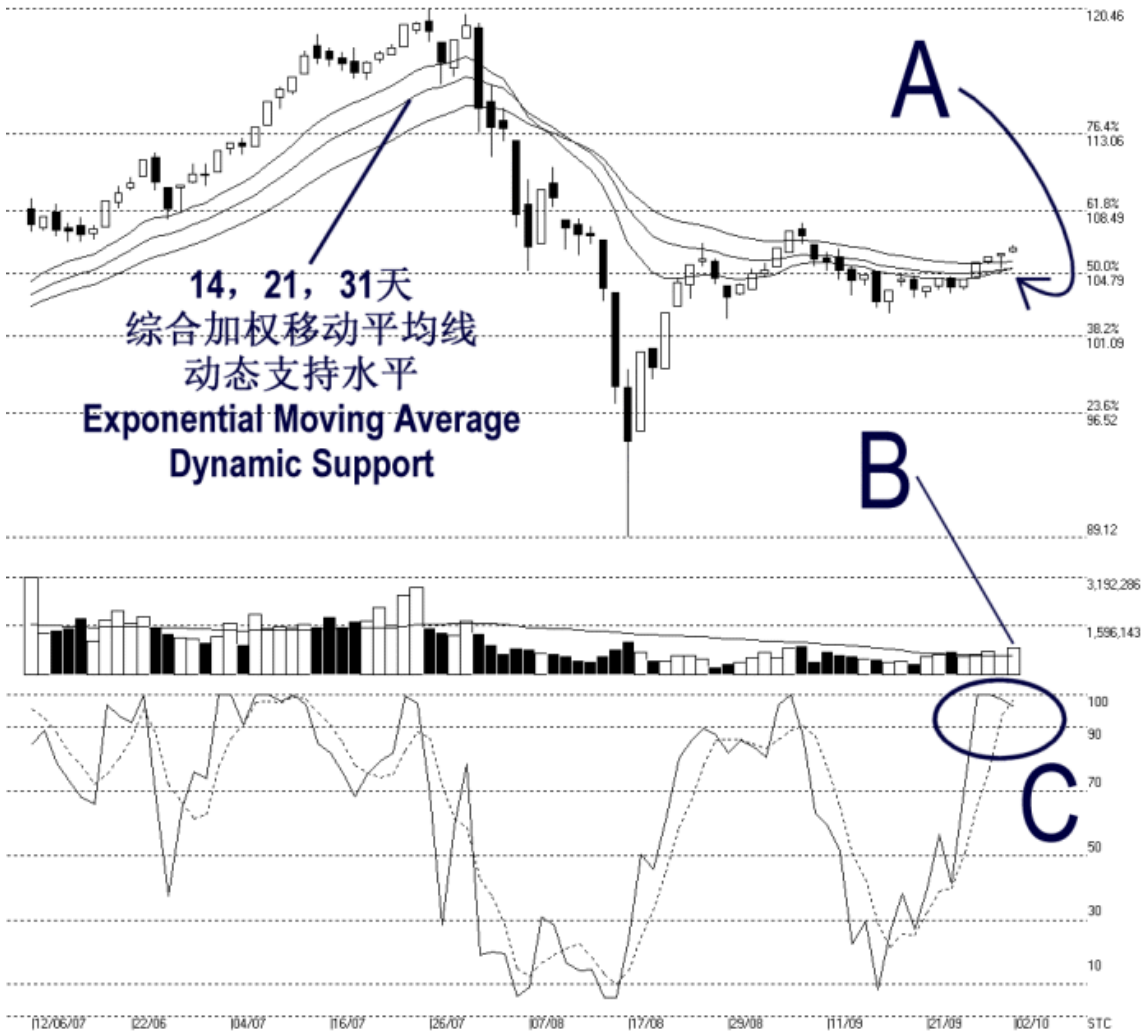




# STRAITS index

Straits Index (M) Sdn Bhd  
WinChart Technical Analysis Provider  
Tel : (03) 8941 6828 Fax : (03) 8941 9828  
Email: info@straitsindex.com

Open:106.100 High:106.400 Low:105.950 Close:106.280 +0.340(0.3%) Volume:877,097 (+256613,41.4%)  
2ND-BOARD [2ND-BOARD] 12/06/2007 - 02/10/2007 Ticks=80 { Indices } Moving Averages e[14,21,31] - Volume Daily (Fibo)  
Created with WinChart (TM) Copyright (C) Straits Index (M) Sdn Bhd



## 2<sup>nd</sup> Board Index Daily Technical Analysis 02/10/2007

As indicated by A, the 2<sup>nd</sup> board index remains supported by the 14, 21, 31 EMA, which is still serving as a dynamic support for the 2<sup>nd</sup> board index. If the 2<sup>nd</sup> board index should remain supported by the rising dynamic support, the outlook shall remain bullish biased. Nevertheless, the next resistance for the 2<sup>nd</sup> board index is seen at 108.49 Fibonacci Retracement line.

As indicated by B, volume for the 2<sup>nd</sup> board market increased 41.4% on Tuesday and the volume managed to break above the 40-day VMA level. This suggests an increase of market participation and if the volume should remain above the 40-day VMA level, it would help to sustain and improve market sentiment.

As circled at C, the Stochastic remains above the 90% level, which is the short term over-bought region. This shows that the 2<sup>nd</sup> board index short term movement was over-heated, thus there is a risk of a technical correction. However, if the Stochastic should remain above the 70% level after the possible technical correction, the market movement for the short term shall remain bullish biased.