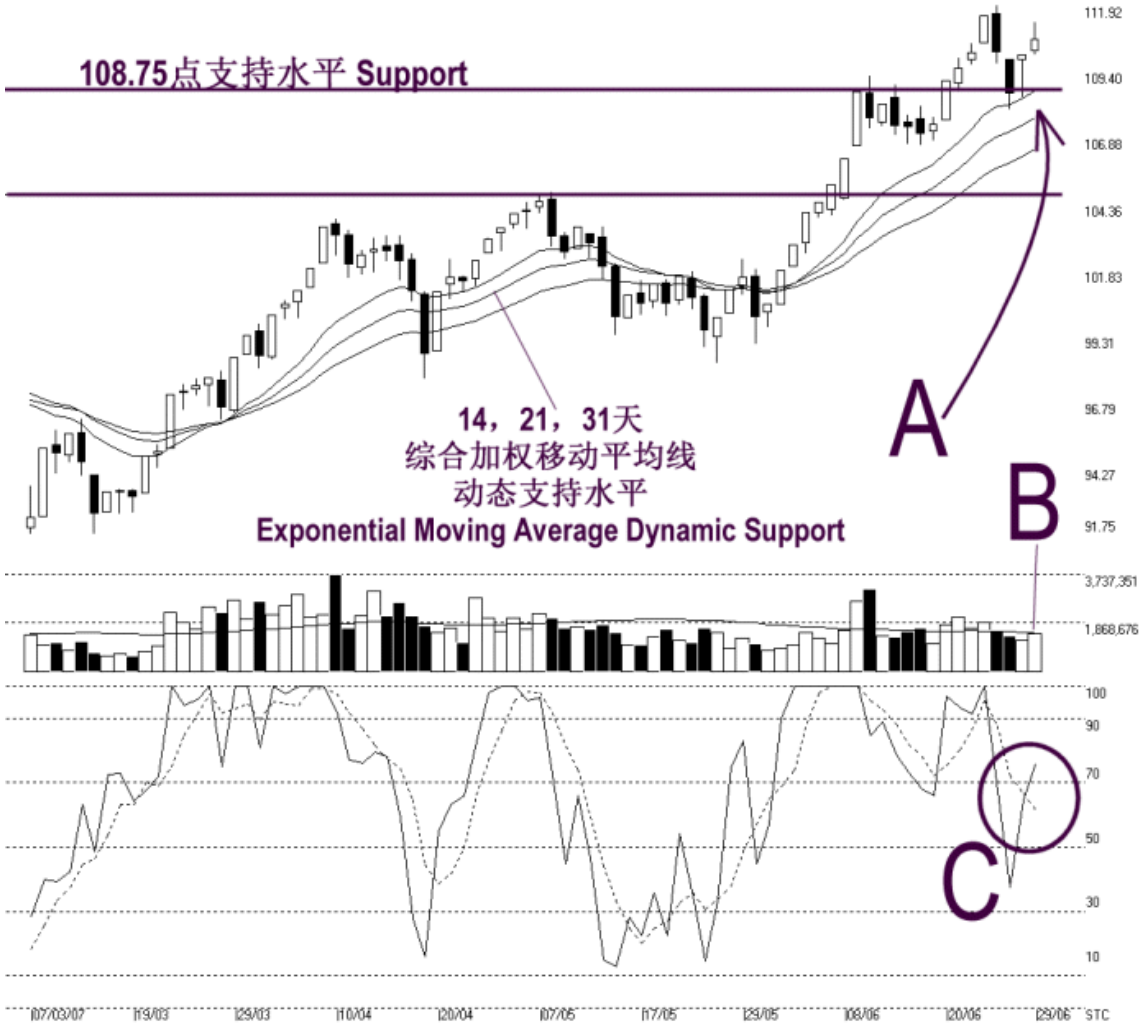




**STRAITS
index**

Straits Index (M) Sdn Bhd
WinChart Technical Analysis Provider
 Tel : (03) 8941 6828 Fax : (03) 8941 9828
 Email: info@straitsindex.com

Open:110.210 High:111.280 Low:110.060 Close:110.650 +0.620(0.6%) Volume:1,454,452 (+255409,21.3%)
 2ND-BOARD [2ND-BOARD] 07/03/2007 - 29/06/2007 Ticks=80 Moving Averages e(14,21,31) - Volume Daily
 Created with WinChart (TM) Copyright (C) Straits Index (M) Sdn Bhd



2nd Board Index Daily Technical Analysis 29/06/2007

After successfully rebounded from the 108.75 support, the 2nd board index rose 0.62 of a point to close at 111.65 points on Friday. As indicated by, the 14, 21, 31 EMA is still serving as the dynamic support to the 2nd board index, and provided that the 2nd board can remains above the rising dynamic support, the outlook is still bullish biased. (Study A) However, the immediate resistance for the 2nd board index is at 111.92 points.

Volume for the 2nd board market increased 21.3% on Friday. As indicated by B, volume for the 2nd board market almost touches the 40-day VMA level. If the volume should continue increase and remain above the 40-day VMA level, the bullish sentiment for the 2nd board index is likely to sustain. In addition, if the 2nd board index should break above

the 111.92 resistance, volume must increase significantly to confirm the break out or the break out is less convincing. (Study B)

On Friday, the Stochastic %K line breaks above the 70% level, triggering an unconfirmed short term bullish signal. If the Stochastic %D line should break above the 70% level, it shall confirm the %K signal and the market movement for the short term would be bullish biased. (Study C)