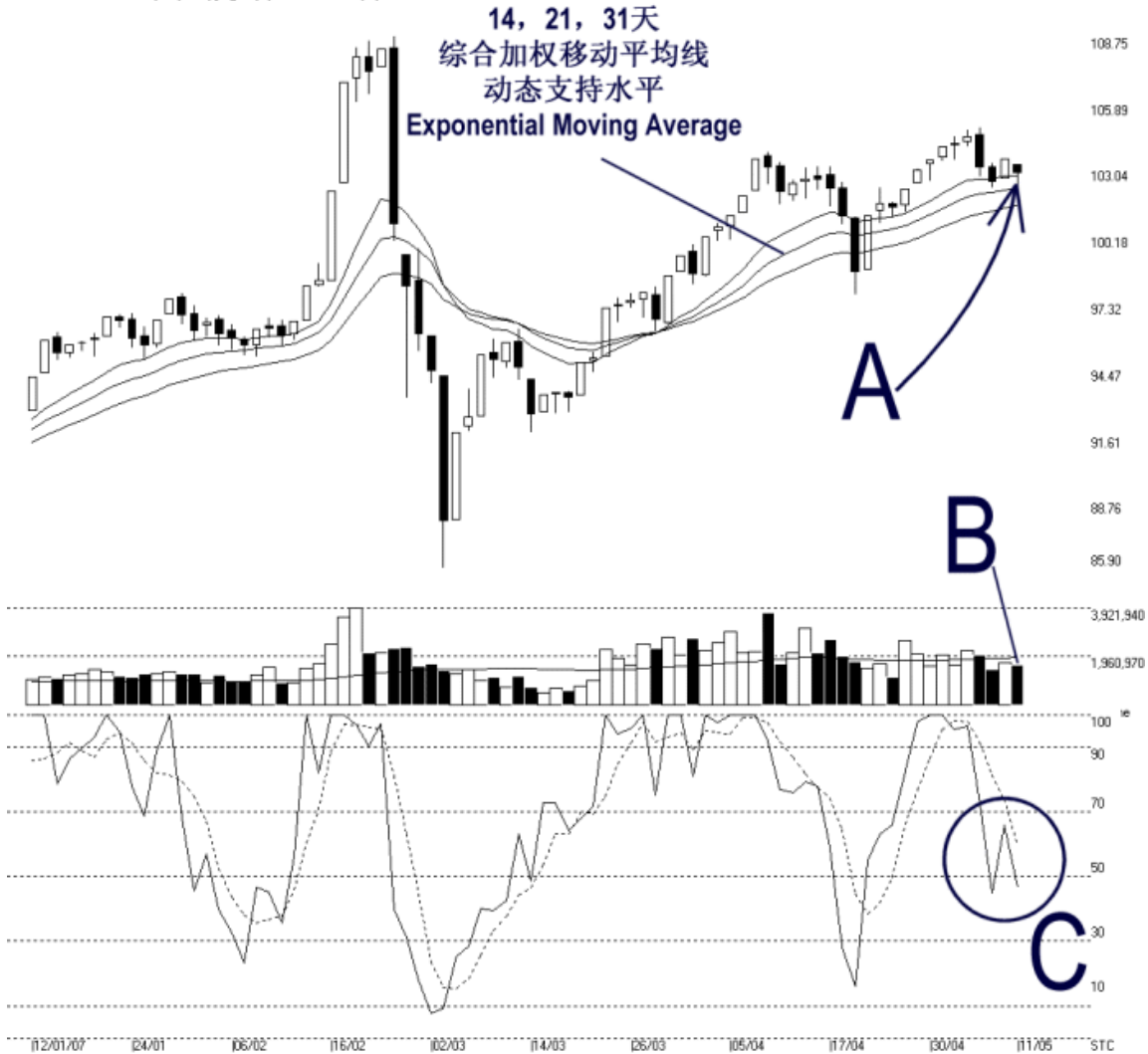




**STRAITS
index**

Straits Index (M) Sdn Bhd
WinChart Technical Analysis Provider
 Tel : (03) 8941 6828 Fax : (03) 8941 9828
 Email: info@straitsindex.com

Open:103.240 High:103.240 Low:102.290 Close:102.890 -0.610(-0.6%) Volume:1,642,619 (-83260,-4.8%)
 2ND-BOARD [2ND-BOARD] 12/01/2007 - 11/05/2007 Ticks=80 Moving Averages e(14,21,31) - Volume Daily
 Created with WinChart (TM) Copyright (C) Straits Index (M) Sdn Bhd



2nd Board Index Daily Technical Analysis 11/05/2007

The 2nd board index had a daily low at 102.29 points; however, it rebounded and closed precisely at the 14 days EMA. Therefore, as indicated by A, the 14, 21, 31 EMA is still serving as the dynamic support to the 2nd board index. Provided that the 2nd board is still supported by the dynamic support, the uptrend remains intact.

As indicated by B, volume for the 2nd board market remains below the 40-day VMA level, suggesting that the market participation of the 2nd board is still relatively low. Therefore, without sufficient market participation, which also represents the inflow fresh capital, the 2nd board is not likely to gain strength. (Study B)

Stochastic %D fell below the 70% level on Friday, ended the short term bullish signal. At the moment, Stochastic is suggesting a neutral signal, and therefore, the market movement for the short term is at neutral. (Study C)