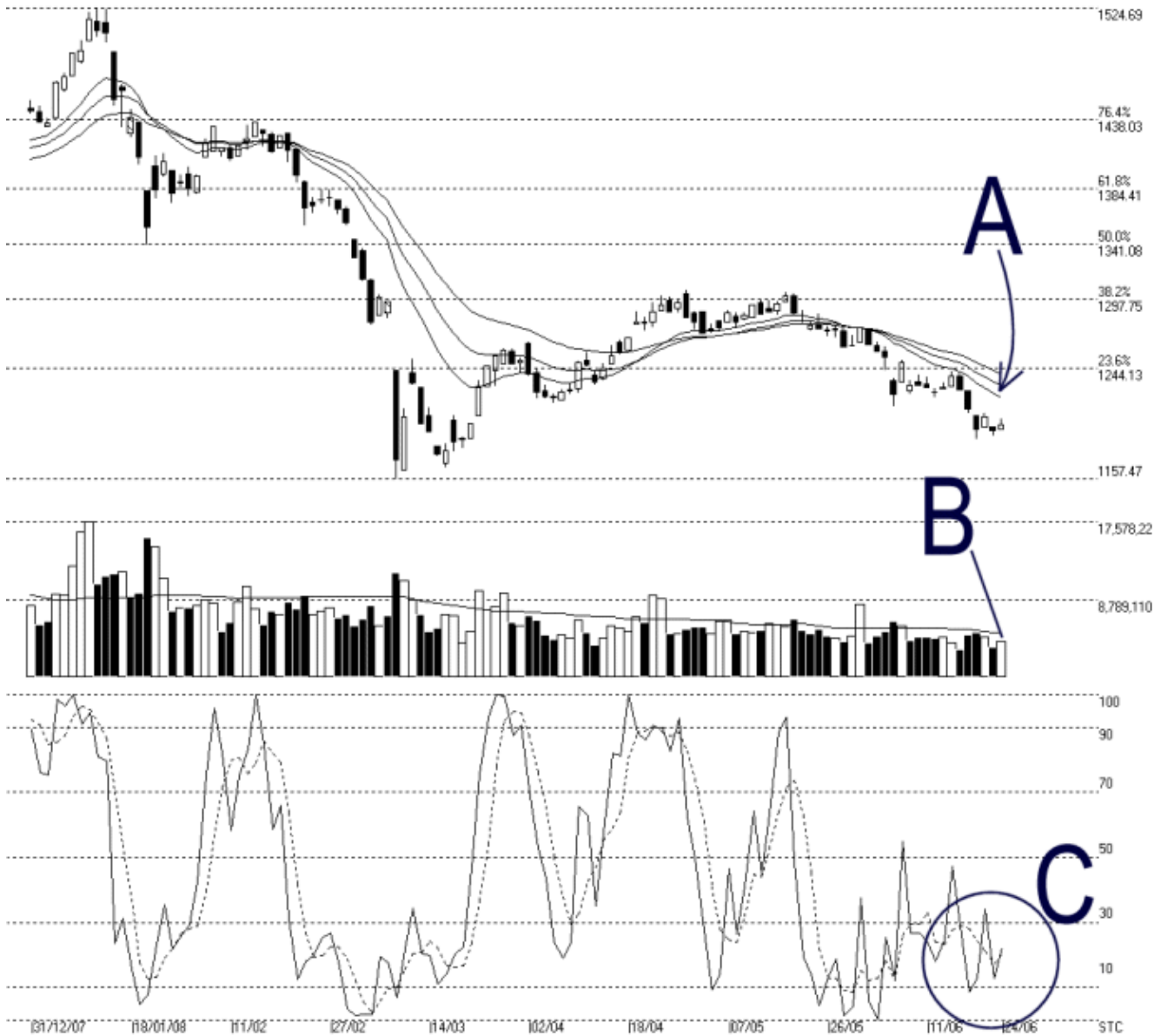




Straits Index (M) Sdn Bhd.  
WinChart Technical Analysis  
Tel: (03) 8941 6828  
Fax: (03) 8941 9828  
email: [info@straitindex.com](mailto:info@straitindex.com)



Open:1196.300 High:1204.690 Low:1196.300 Close:1200.280 +4.870(0.4%) Volume:3.978.286 (+597832.177%)  
COMPOSITE INDEX [COMPOSITE] 31/12/2007 - 24/06/2008 Ticks=118 { Indices } Moving Averages e(14,21,31) 1221.213, 1230.692, 1239.954  
Created with WinChart (TM) Copyright (C) Straits Index (M) Sdn Bhd



### Composite Index Daily Technical Analysis, 24/06/2008, by Straits Index (M) Sdn Bhd

As shown on the chart above, the KLCI ended a few points higher to close marginally above the 1200 level. However, as indicated by A, the 14, 21, 31 EMA is still serving as the dynamic resistance for the KLCI. Therefore, the immediate outlook for the KLCI remains bearish biased, and the support for the KLCI remains at 1157 level.

As indicated by B, although total march increased 17.7%, it is still below the 40-day VMA level. This shows that our market is still lightly participated, and the overall liquidity is still insufficient. Therefore, the KLCI is likely to remain weak.

As circled at C, the Stochastic is still showing a short term bearish signal, with the Stochastic staying below the 30% level. As long as the Stochastic is still below the 30% level, the short term bearish signal shall continue.

© 2008 Straits Index (M) Sdn Bhd

[www.straitsindex.com](http://www.straitsindex.com)

*WinChart – Designed by investor for investors, since 1998*