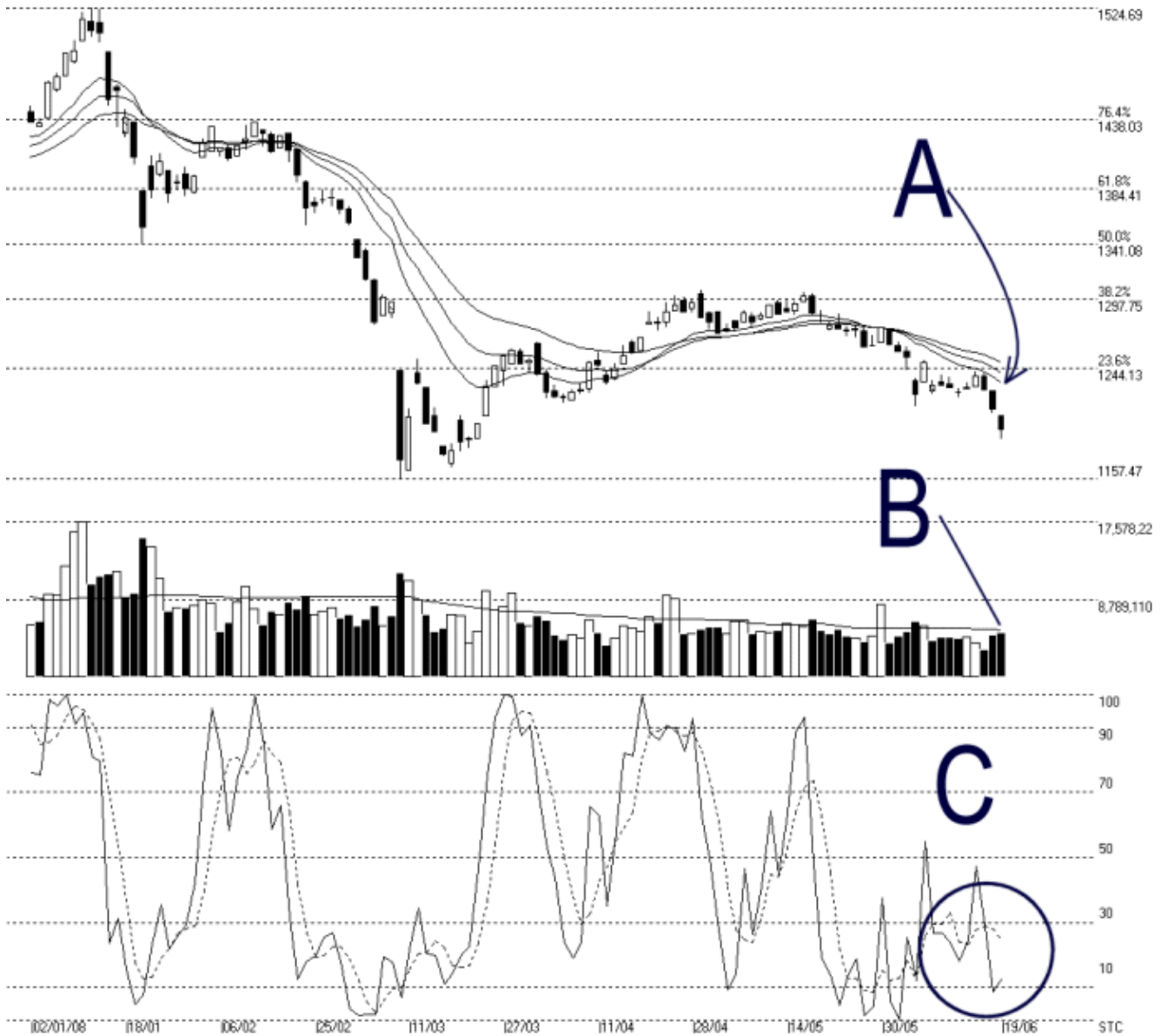




Straits Index (M) Sdn Bhd.  
WinChart Technical Analysis  
Tel: (03) 8941 6828  
Fax: (03) 8941 9828  
email: [info@straitsindex.com](mailto:info@straitsindex.com)



Open:1207.180 High:1207.180 Low:1188.500 Close:1196.390 -16.200(-1.3%) Volume:4,998,774 (+251655.53%)  
COMPOSITE INDEX [COMPOSITE] 02/01/2008 - 19/06/2008 Ticks=114 { Indices } Moving Averages e(14,21,31) 1232.319, 1240.655, 1248.35 -1  
Created with WinChart (TM) Copyright (C) Straits Index (M) Sdn Bhd



### Composite Index Daily Technical Analysis, 19/06/2008, by Straits Index (M) Sdn Bhd

The KLCI continue to fall on Thursday, closing 16.20 lower to 1196.39. As indicated by A, the 14, 21, 31 EMA is still serving as the dynamic resistance for the KLCI. Therefore, provided that the dynamic resistance is still falling while the KLCI is still below the dynamic resistance, the bearish biased view is still intact. Support for the KLCI is at 1157 Fibonacci Retracement line.

As indicated by B, total market volume increased 5.3%, and the increase of volume was also resulted a loss in the KLCI, which suggested some increase of selling pressure. If the volume should increase significantly as the KLCI falls, it would further dampen the market sentiment.

As circled at C, the Stochastic remains below the 30% level short term bearish region, suggesting the short term market movement for the KLCI is still bearish biased.

© 2008 Straits Index (M) Sdn Bhd

[www.straitsindex.com](http://www.straitsindex.com)

*WinChart – Designed by investor for investors, since 1998*