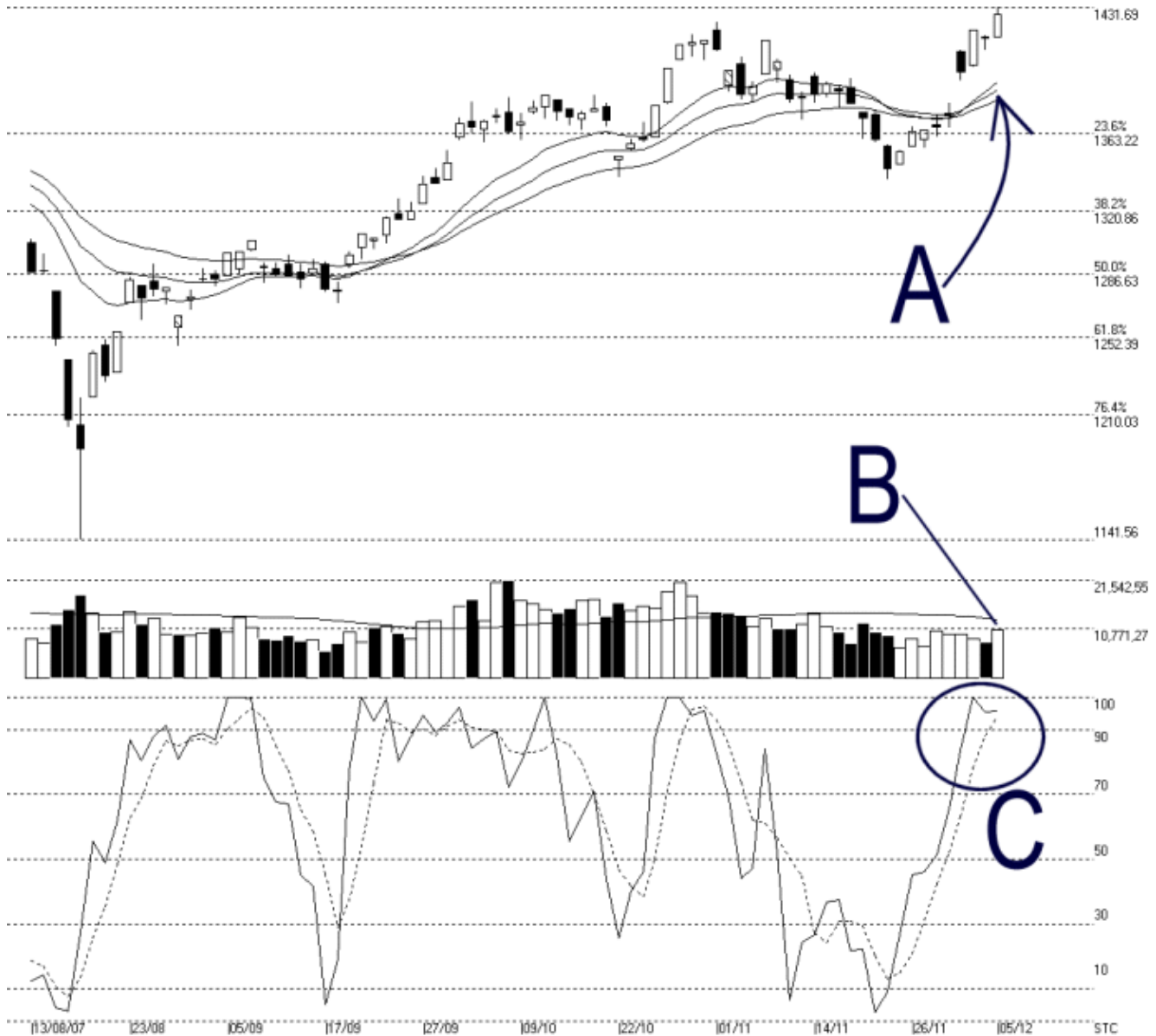




**STRAITS  
index**

**Straits Index (M) Sdn Bhd.**  
**WinChart Technical Analysis**  
 Tel: (03) 8941 6828  
 Fax: (03) 8941 9828  
 email: [info@straitsindex.com](mailto:info@straitsindex.com)

Open:1415.760 High:1431.690 Low:1415.240 Close:1427.770 +11.960(0.8%) Volume:10,714,355 (+2715666.34.0%)  
 COMPOSITE INDEX [COMPOSITE] 13/08/2007 - 05/12/2007 Ticks=80 ( Indices ) Moving Averages e(14.21.31) - Volume Daily (Fibo)  
 Created with WinChart (TM) Copyright (C) Straits Index (M) Sdn Bhd



**Composite Index Daily Technical Analysis, 05/12/2007, by Straits Index (M) Sdn Bhd**

The KLCI set another record high on Wednesday at 1431.69 points, and closing 11.96 points higher to 1427.77 points. As indicated by A, the 14, 21, 31 EMA shall continue serving as the dynamic support for the KLCI. As long as the KLCI is supported by the dynamic support, the outlook would be bullish biased.

As indicated by B, despite the KLCI touching a record high, total market remains below the 40-day VMA level. Although overall market participation is still relatively low, we see some improvement of volume on Wednesday. Nevertheless, volume must break above the 40-day VMA level in order to sustain the bullishness of the KLCI.

As circled at C, the Stochastic is still showing a short term bullish signal, with the Stochastic staying above the 70% level. Therefore, the short term bullish signal is expected to continue until the Stochastic falls below the 70% level.