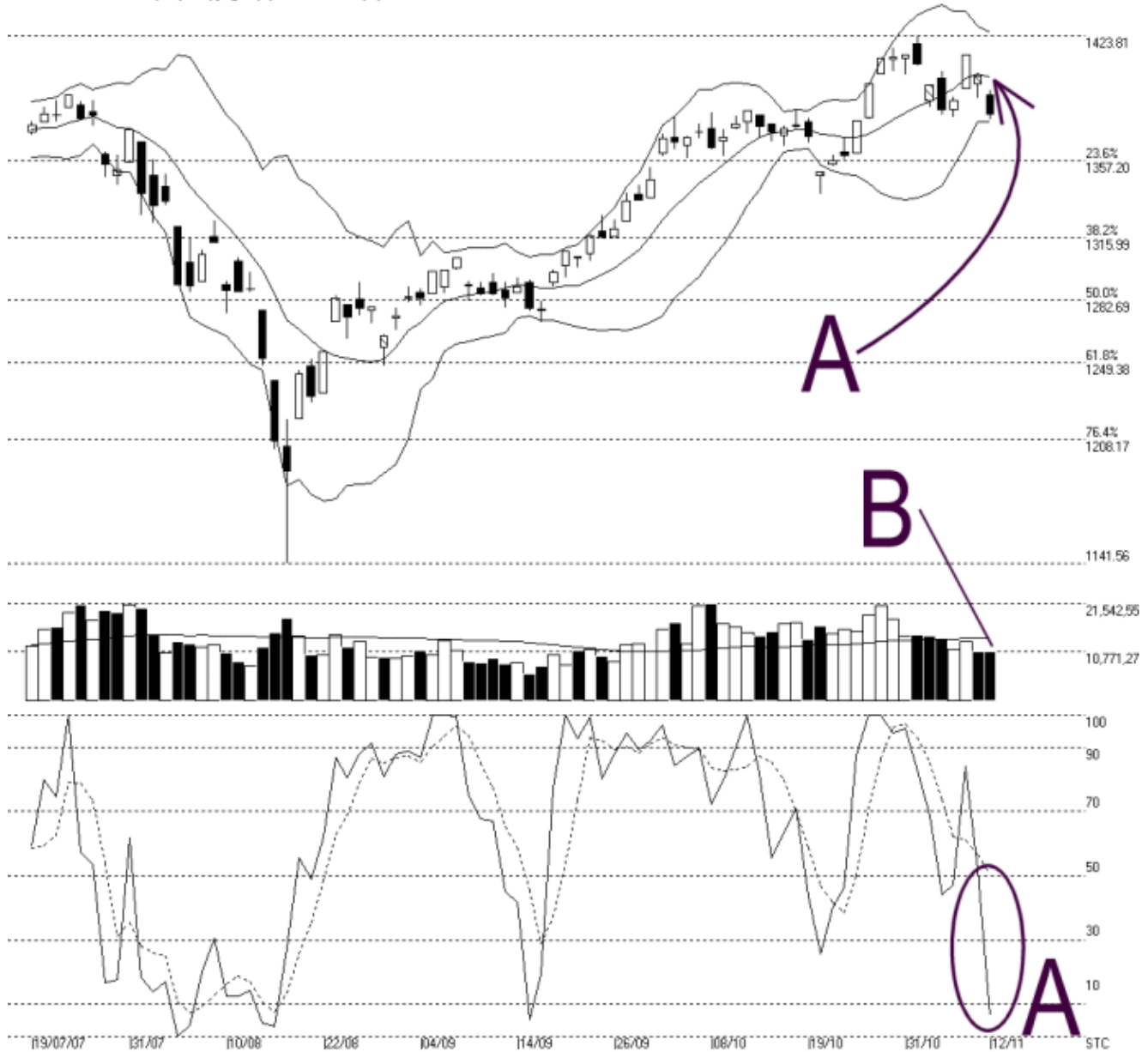




Straits Index (M) Sdn Bhd.
WinChart Technical Analysis
Tel: (03) 8941 6828
Fax: (03) 8941 9828
email: info@straitsindex.com

Open:1392.520 High:1394.860 Low:1379.390 Close:1382.350 -19.900(-1.4%) Volume:10,962,733 (+179627.17%)
 COMPOSITE INDEX [COMPOSITE] 19/07/2007 - 12/11/2007 Ticks=80 { Indices } Bollinger Band(10,2) -7% - Volume Daily (Fibo)
 Created with WinChart (TM) Copyright (C) Straits Index (M) Sdn Bhd



Composite Index Daily Technical Analysis, 12/11/2007, by Straits Index (M) Sdn Bhd

As shown on the chart above, the KLCI ended 19.90 points on Monday. Meanwhile, the Bollinger Bands Width is still contracting suggesting that the direction of the KLCI is still unclear. However, if the Bollinger Bands Width should expand with the KLCI staying below the Bollinger Middle Band (as indicated by A) it would be a bearish movement signal; and the next support for the KLCI would be the

1357.20 Fibonacci Retracement line.

As indicated by B, total market volume on Monday was almost unchanged, only gaining 1.7%. However, volume remains below the 40-day VMA level, suggesting that the overall market participation is relatively insufficient. Therefore, as long as the market volume should remain below the 40-day VMA level, the KLCI movement is likely to be on the weaker side.

As circled at C, the Stochastic %K line falls below the 30% level, giving an unconfirmed short-term bearish signal. If the %D line should also fall below the 30% level, it would confirm the %K signal, and the market movement for the short term would turn to bearish biased.