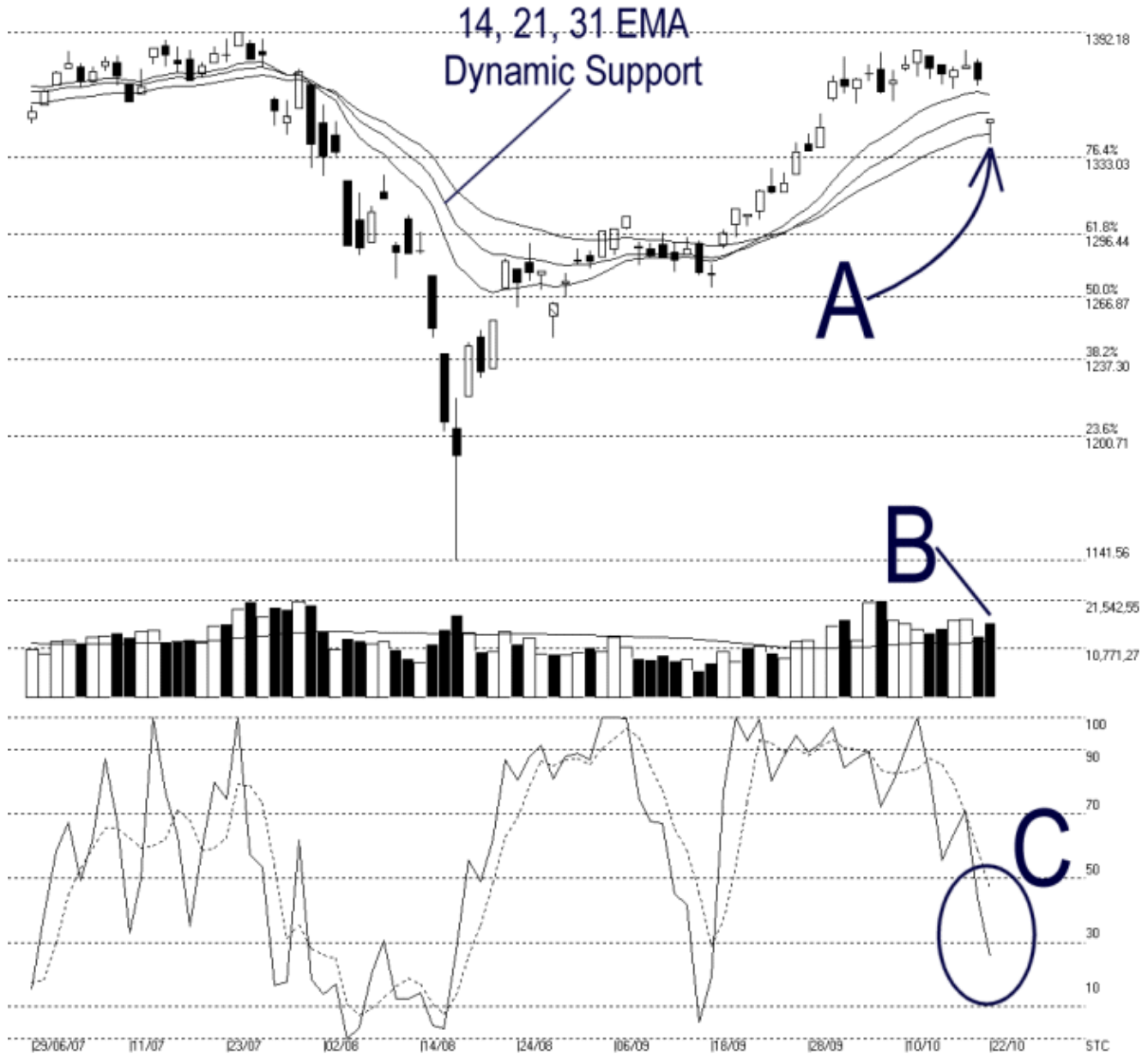




**Straits Index (M) Sdn Bhd.**  
**WinChart Technical Analysis**  
 Tel: (03) 8941 6828  
 Fax: (03) 8941 9828  
 email: [info@straitsindex.com](mailto:info@straitsindex.com)

Open:1349.180 High:1350.320 Low:1339.360 Close:1350.810 -19.360(-1.4%) Volume:16,518,708 (+2800211,20.4%)  
 COMPOSITE INDEX [COMPOSITE] 29/06/2007 - 22/10/2007 Ticks=80 { Indices } Moving Averages e(14,21,31) - Volume Daily (Fibo)  
 Created with WinChart (TM) Copyright (C) Straits Index (M) Sdn Bhd



**Composite Index Daily Technical Analysis, 23/10/2007, by Straits Index (M) Sdn Bhd**

As indicated by A, the KLCI rebounded and retested the 14, 21, 31 EMA, closing 6.52 points higher to 1357.33 points. At the moment, the KLCI has not formed any new trend, for it is still staying in the congestion zone. If the KLCI should remain resisted by the 14, 21, 31 EMA, the outlook shall turn negative. Nevertheless, support for the KLCI remains in 1333.03 Fibonacci Retracement.

As indicated by B, total market volume remains above the 40-day VMA level, suggesting that the overall market is still actively participated. If the KLCI should resume its position above the 14, 21, 31 EMA, with volume staying above the 40-day VMA level, there is a better chance for the KLCI to maintain its previous positive sentiment.

As circled at C, the Stochastic %K line rebounded and break above the 30% level, which is away from the short term bearish region. Therefore, at the moment, the Stochastic is suggesting a short term neutral signal.