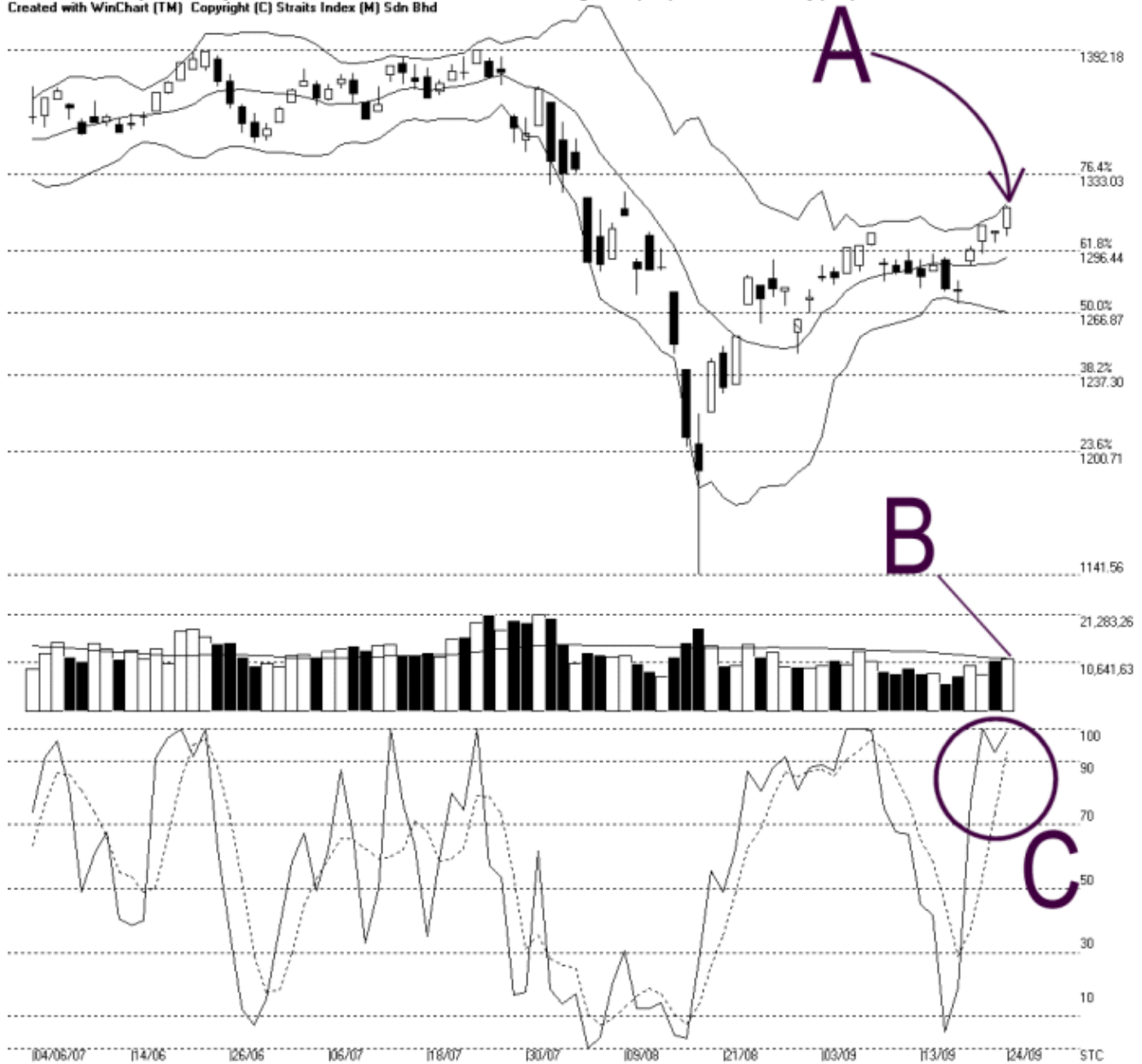




Straits Index (M) Sdn Bhd.  
WinChart Technical Analysis  
Tel: (03) 8941 6828  
Fax: (03) 8941 9828  
email: [info@straitsindex.com](mailto:info@straitsindex.com)

Open:1307.700 High:1317.540 Low:1303.230 Close:1317.240 +11.300(0.9%) Volume:11,450,575 (+248857.22%)  
COMPOSITE INDEX [COMPOSITE] 04/06/2007 - 24/09/2007 Ticks=80 { Indices } Bollinger Band(10.2) 17% - Volume Daily (Fibo)  
Created with WinChart (TM) Copyright (C) Straits Index (M) Sdn Bhd



### Composite Index Daily Technical Analysis, 24/09/2007, by Straits Index (M) Sdn Bhd

As indicated by A, the Bollinger Bands Width for the KLCI expanded another 17% on Monday. With the KLCI staying above the Bollinger Middle Band, the expansion of the Bollinger Bands Width suggests a bullish signal. If the KLCI should remains above the Bollinger Middle Band, the upside movement is expected to continue. Nevertheless, the next resistance for the KLCI is still at 1333

## Fibonacci Retracement Line.

As indicated by B, total market volume increased slightly on Monday while testing the 40-day VMA level. If volume should break above the 40-day VMA level and maintain above the 40-day VMA level, the market sentiment is expected to improve.

On Monday, the Stochastic break above the 90% level, which is the short-term over-bought region. This suggests that the KLCI short term is indeed bullish but however slightly over-heated. Nevertheless, provided that the Stochastic can remain above the 70% level, the market movement for the short term is likely to be bullish biased. (Study C)