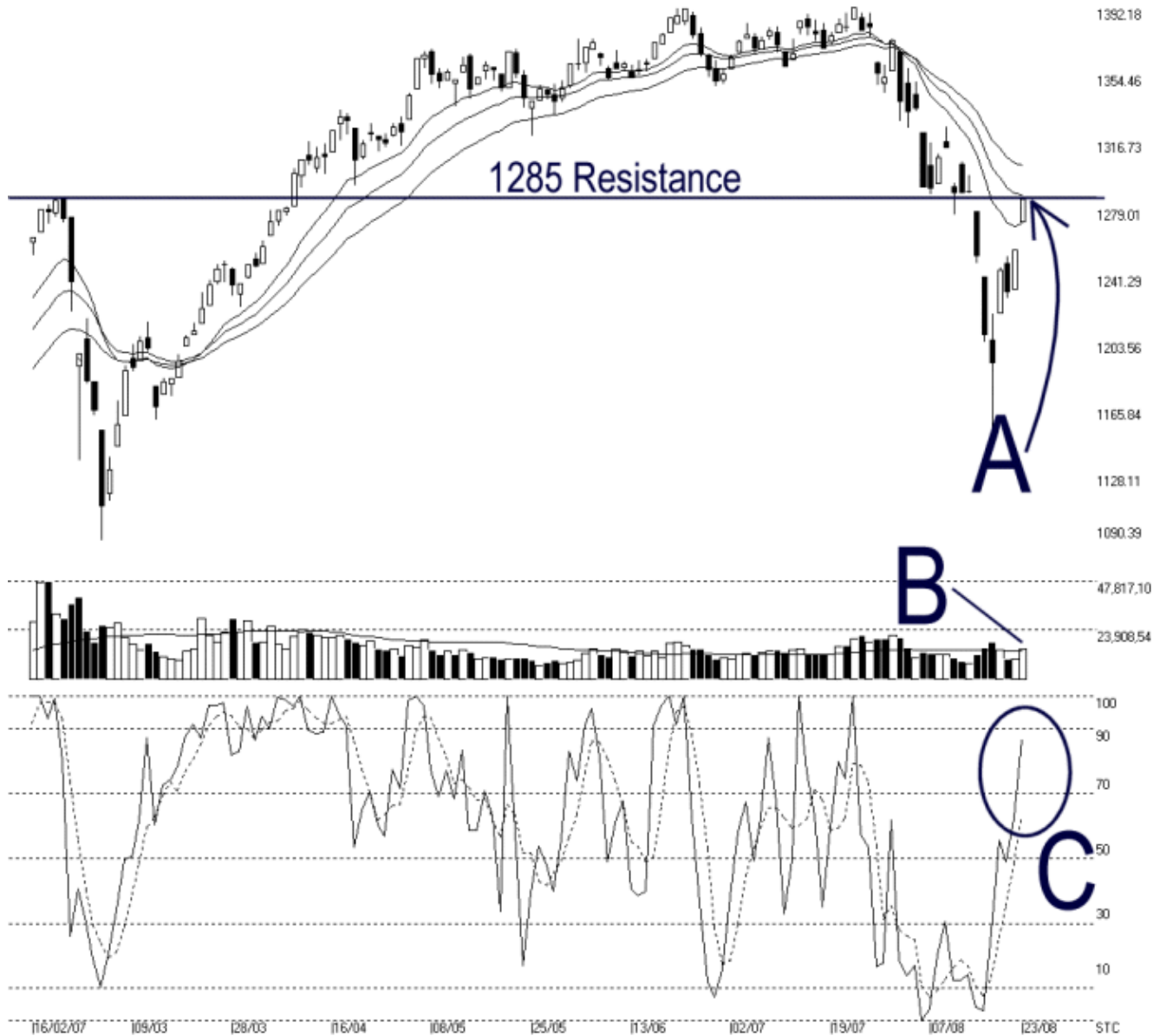




Straits Index (M) Sdn Bhd.
WinChart Technical Analysis
Tel: (03) 8941 6828
Fax: (03) 8941 9828
email: info@straitsindex.com

Open:1270.950 High:1284.880 Low:1270.950 Close:1283.620 +28.230(2.2%) Volume:14,728,942 (+4611894.45 6%)
 COMPOSITE INDEX [COMPOSITE] 16/02/2007 - 23/08/2007 Ticks=130 { Indices } Moving Averages e(14,21,31) - Volume Daily
 Created with WinChart (TM) Copyright (C) Straits Index (M) Sdn Bhd



Composite Index Daily Technical Analysis, 23/08/2007, by Straits Index (M) Sdn Bhd

As indicated by A, the KLCI precisely resisted at the 1285 resistance level, as well as the 21-day EMA dynamic resistance. Therefore, if the KLCI should retreat after hitting this resistance level, the outlook for the KLCI shall remain bearish biased.

Total market volume on Thursday increased 45.6%, and slightly breaking above the 40-day VMA

level; suggesting some increase of market participation. If the volume should remain above the 40-day VMA level, the market sentiment is likely to improve.

As circled at C, the Stochastic %K line breaks above the 70% level, which triggered an unconfirmed short term bullish signal. If the Stochastic %D line should break above the 70% level, it would confirm the %K signal, and the market movement for the short term would turn from neutral to bullish biased.
(Study C)