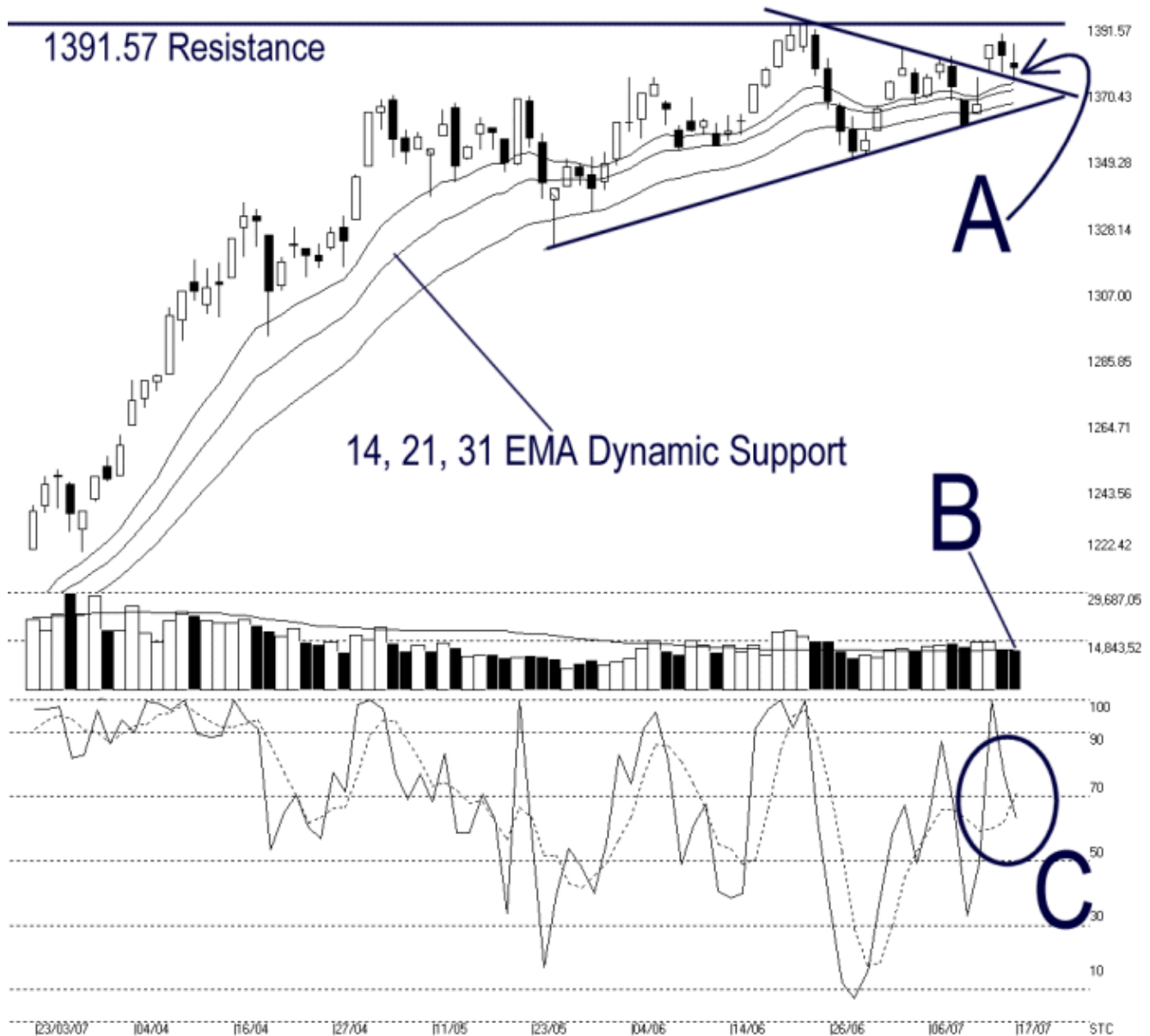




Straits Index (M) Sdn Bhd.  
WinChart Technical Analysis  
Tel: (03) 8941 6828  
Fax: (03) 8941 9828  
email: [info@straitsindex.com](mailto:info@straitsindex.com)

Open:1378.940 High:1385.050 Low:1373.050 Close:1377.480 -4.030(-0.3%) Volume:12,389,155 (+75521.06%)  
COMPOSITE INDEX [COMPOSITE] 23/03/2007 - 17/07/2007 Ticks=80 Moving Averages e[14,21,31] - Volume Daily  
Created with WinChart (TM) Copyright (C) Straits Index (M) Sdn Bhd



### Composite Index Daily Technical Analysis, 17/07/2007, by Straits Index (M) Sdn Bhd

As indicated by A, the KLCI had a daily low at 1373.05 points, where it touches the upper line of the symmetrical triangle as well as the 14 day-EMA dynamic support. At the moment, the KLCI is still consolidating. However, if the pullback of Monday and Tuesday is valid, it would be an implication of an end to the symmetrical triangle consolidation. (Study A)

Total market volume on Tuesday was almost unchanged. Again, from the technical analysis point of view, it is generally considered normal to have a lower volume during a consolidation. However, if the KLCI should test the immediate resistance at 1391.57 points, more volume is definitely needed. (Study B)

As circled at C, the Stochastic is still showing a mixed signal in the neutral region. Both the %K and %D line must break and stay above the 70% level in order to show a short term bullish signal. (Study C)