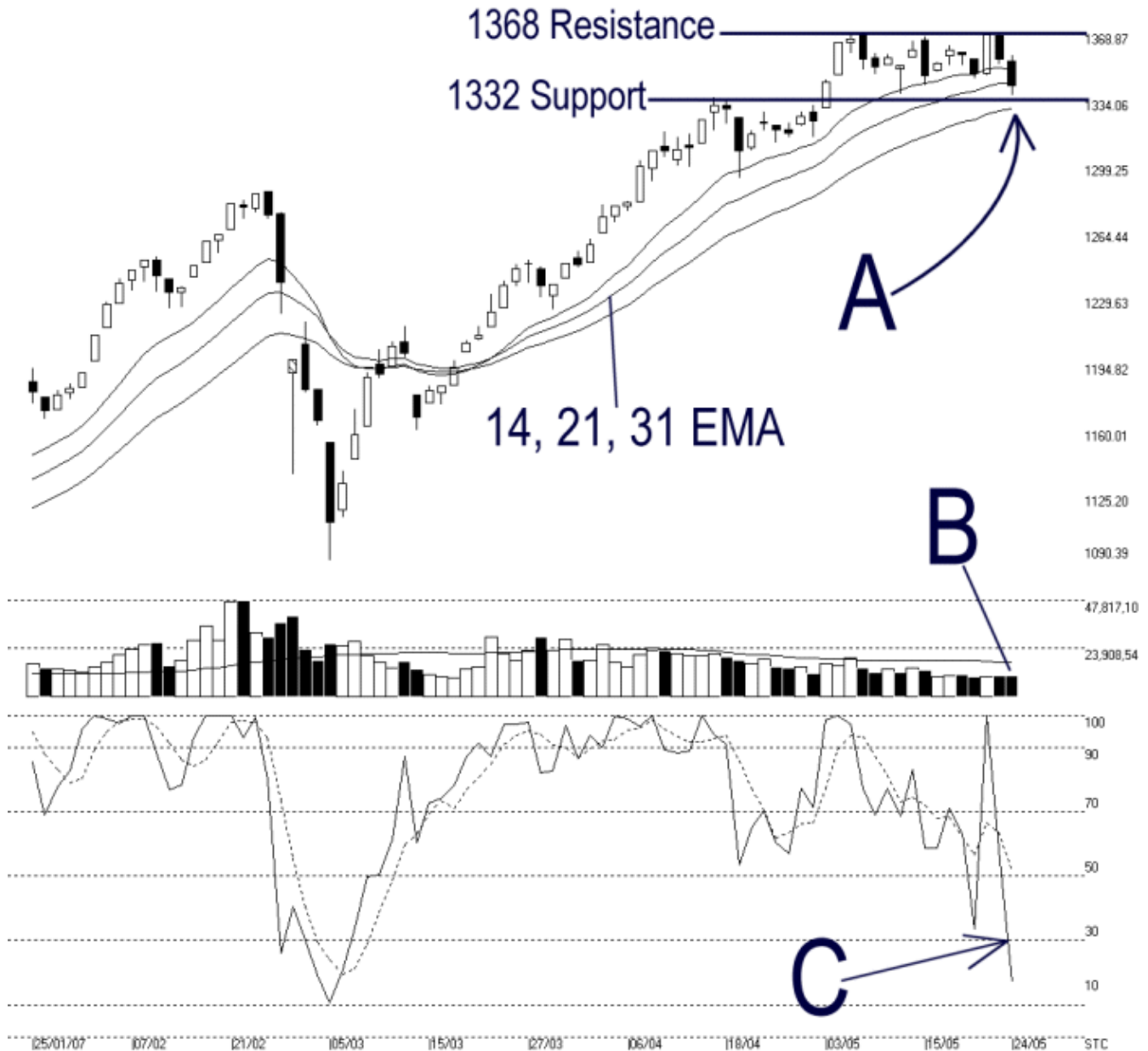




Straits Index (M) Sdn Bhd.
WinChart Technical Analysis
Tel: (03) 8941 6828
Fax: (03) 8941 9828
email: info@straitsindex.com

Open:1353.640 High:1356.390 Low:1335.370 Close:1340.990 -14.000(-1.02%) Volume:10,315,843 (-224311,-2.12%)
COMPOSITE INDEX [COMPOSITE] 25/01/2007 - 24/05/2007 Ticks=80 Moving Averages e[14,21,31] - Volume Daily
Created with WinChart (TM) Copyright (C) Straits Index (M) Sdn Bhd



Composite Index Daily Technical Analysis, 24/05/2007, by Straits Index (M) Sdn Bhd

The KLCI ended lower on Thursday, closing the day 14 points lower to 1340 points. As indicated by A, the KLCI has dropped below the 14-day EMA line while still supported by the 21-day and 31-day EMA. Therefore, the KLCI is still in its consolidation between the 1332 support and 1368 resistance.

Total market volume for Thursday remains low while further below the 40-day VMA level. This suggests that the market participation is still low, and the KLCI is less likely to regain its strength without sufficient inflow of fresh capital. (Study B)

Stochastic %K line fell below the 30% level in response to the KLCI Thursday's decline. At the moment, the Stochastic %K triggered an unconfirmed short term bearish signal. If the %D line should fall below the 30% level, it shall confirm the %K signal, and the market movement for the short term would be bearish biased. (Study C)