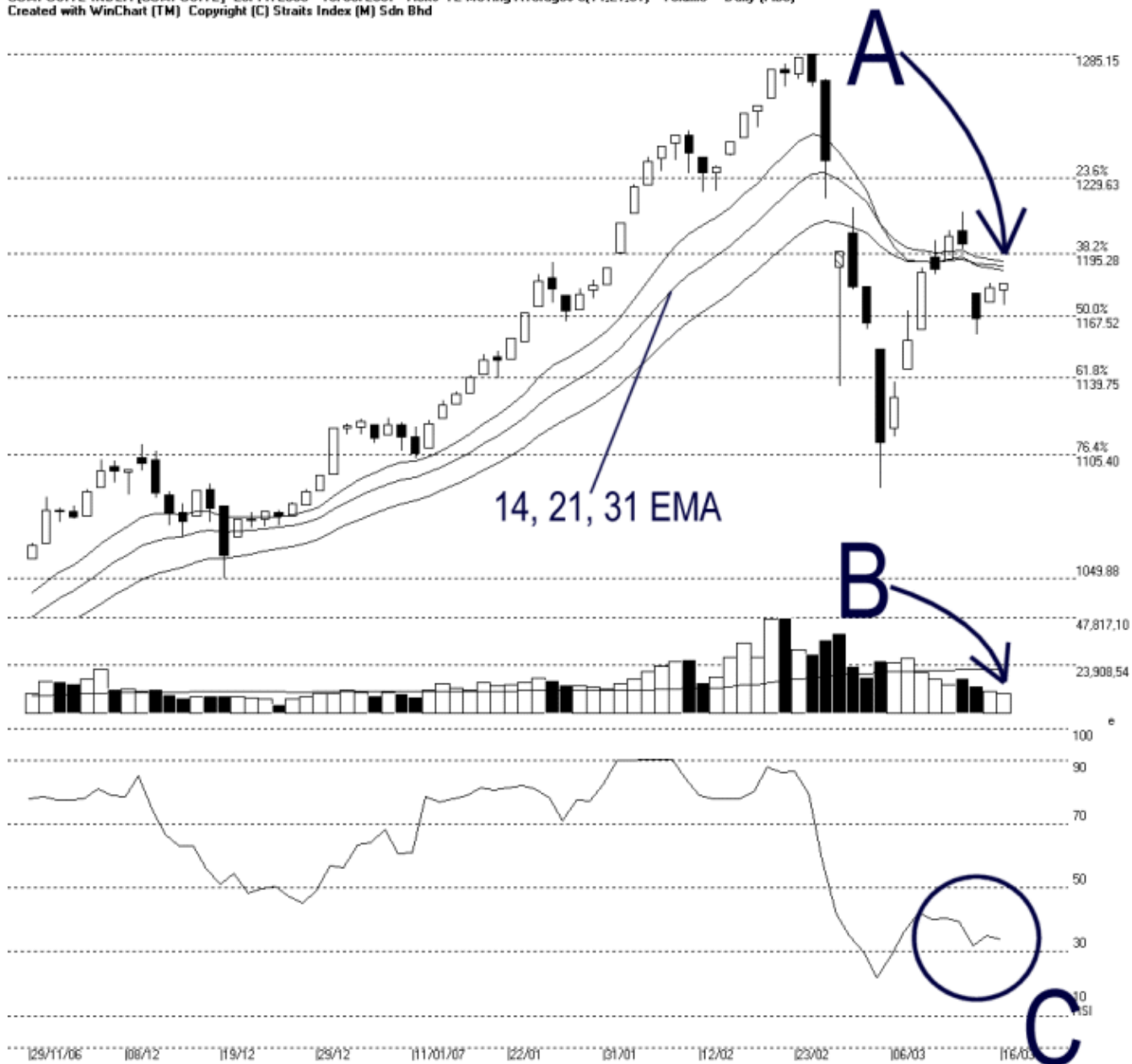




Straits Index (M) Sdn Bhd.
WinChart Technical Analysis
Tel: (03) 8941 6828
Fax: (03) 8941 9828
email: info@straitsindex.com

Open:1179.230 High:1182.330 Low:1172.430 Close:1182.200 +1.890(0.2%) Volume:9.920.847 (-1168496,-10.5%)
COMPOSITE INDEX [COMPOSITE] 29/11/2006 - 16/03/2007 Ticks=72 Moving Averages e(14,21,31) - Volume Daily (Fibo)
Created with WinChart (TM) Copyright (C) Straits Index (M) Sdn Bhd



Composite Index Daily Technical Analysis, 16/03/2007, by Straits Index (M) Sdn Bhd

KLCI ended marginally 1.89 points higher to 1182.20 points. As pointed by A, the KLCI is still testing the 14, 21, 31 EMA dynamic resistance, and therefore, if the KLCI started to retreat again, the outlook for the KLCI shall remained negative bias. Nevertheless, the 1105.40 Fibonacci Retracement is still the next support level for the KLCI.

Total market volume reduced another 10.5%, with less than 10 million shares. (the lowest since January 11th 2007). Also, total market volume was below the 40 days VMA level, suggested that the market participation was relatively insufficient. Therefore, the KLCI is likely to stay weak, until the volume starts increasing. (Study B)

On Friday, WinChart RSI continued staying at the mid-term neutral region. If the WinChart RSI fell below 30% level, the market movement would turn to bearish. (Study C)