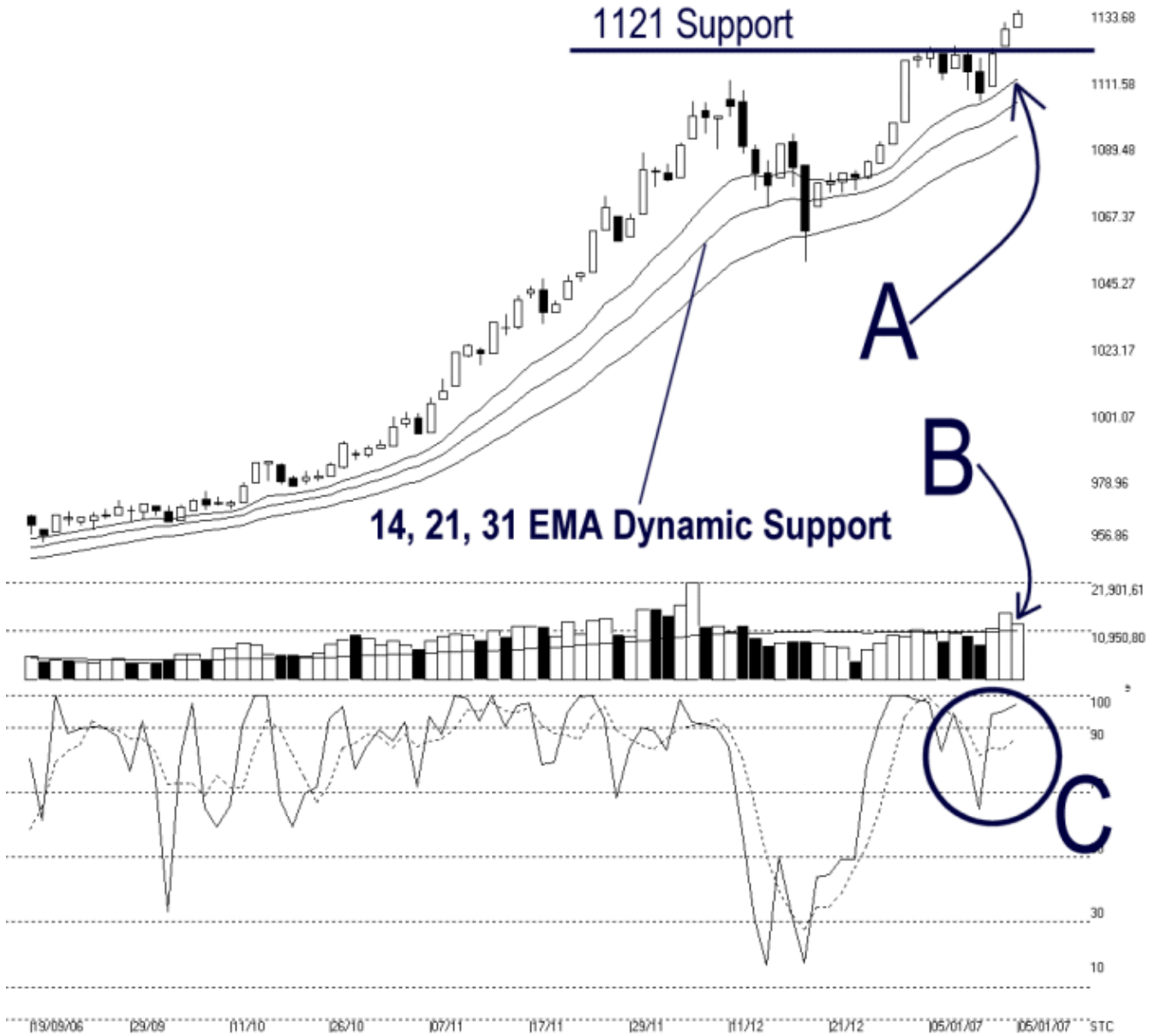




Straits Index (M) Sdn Bhd.
WinChart Technical Analysis
Tel: (03) 8941 6828
Fax: (03) 8941 9828
email: info@straitsindex.com

Open:1128.080 High:1133.680 Low:1128.080 Close:1132.610 +5.200(0.5%) Volume:12,578,271 (-2439175,-16.2%)
 COMPOSITE INDEX [COMPOSITE] 19/09/2006 - 16/01/2007 Ticks=80 Moving Averages e[14,21,31] - Volume Daily 16-1-2007 17:06:24
 Created with WinChart (TM) Copyright (C) Straits Index (M) Sdn Bhd



Composite Index Daily Technical Analysis, 16/01/2007, by Straits Index (M) Sdn Bhd

KLCI ended higher on Tuesday, closing at 1132.61 point, up 5.2 points. As pointed by A, the 14, 21, 31 EMA remained rising and continued serving as the dynamic support to the KLCI. Provided that the KLCI could continued be supported by the dynamic support, the outlook for the KLCI remained positive bias. (Study A) Mean while, the 1121 is also a support level.

Despite the KLCI made another multi-year new high, total market volume declined 16.2% while managed to stay above the 40 days VMA level. Provided that the market volume could remained above the 40 days VMA level, the bullish market sentiment is likely to sustain. (Study B)

Stochastic remained higher above 70% level, suggested that the market movement for the short-term is still bullish. The short-term bullishness is expected to continue until the Stochastic fell below 70% level. (Study C)