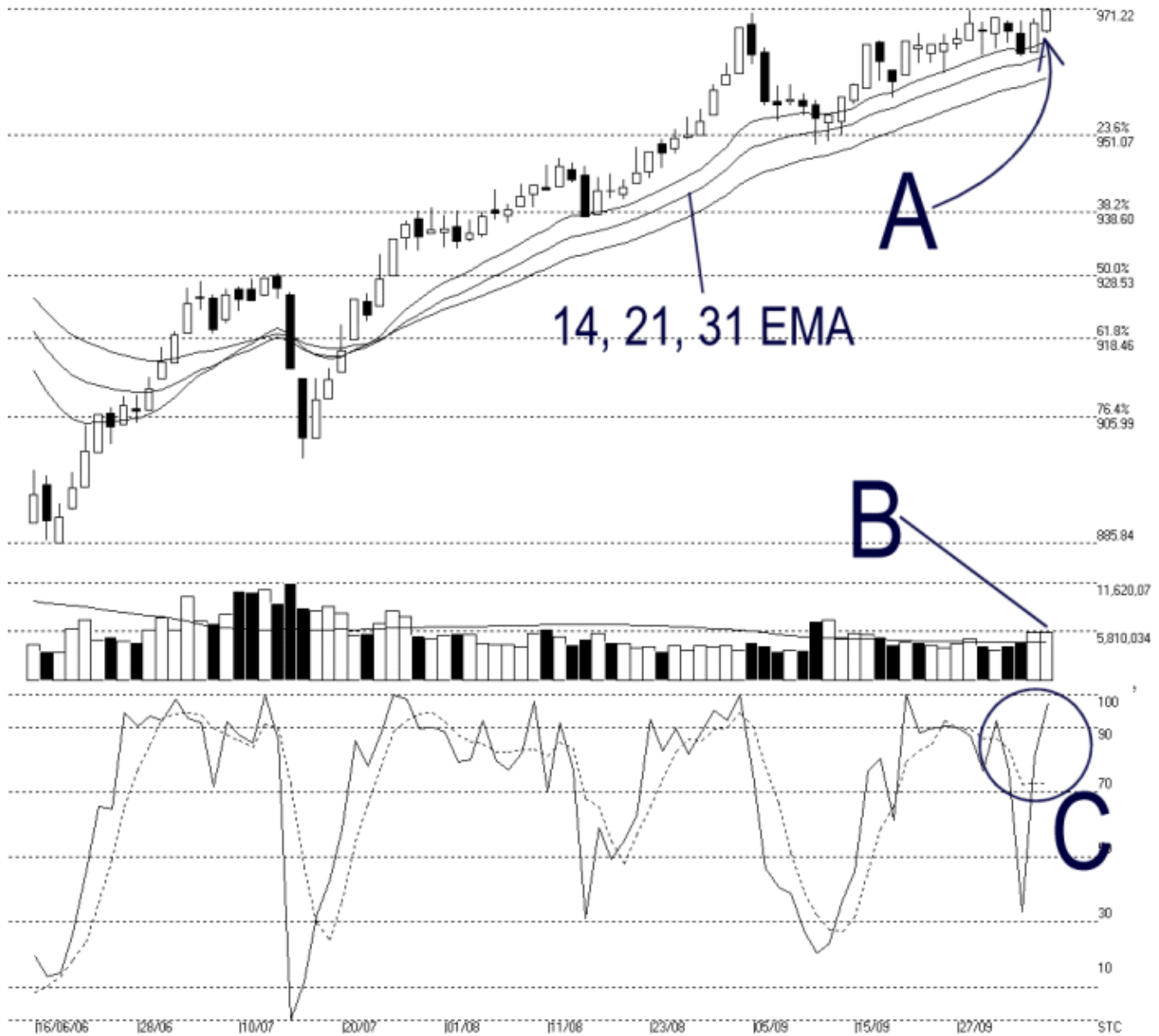




**STRAITS  
index**

**Straits Index (M) Sdn Bhd.**  
**WinChart Technical Analysis**  
 Tel: (03) 8941 6828  
 Fax: (03) 8941 9828  
 email: [info@straitsindex.com](mailto:info@straitsindex.com)

Open:967.680 High:971.220 Low:967.190 Close:970.980 +2.090(0.2%) Volume:5,704,361 (+12398.02%)  
 COMPOSITE INDEX [COMPOSITE] 16/06/2006 - 06/10/2006 Ticks=80 Moving Averages e[14,21,31] - Volume Daily  
 Created with WinChart (TM) Copyright (C) Straits Index (M) Sdn Bhd



**Composite Index Daily Technical Analysis, 06/10/2006, by Straits Index (M) Sdn Bhd**

KLCI broke a new high on Friday at 971.22 while closing the day at 970.98 points. However, the break-out was only marginal, and therefore, it is yet to be confirmed. Nonetheless, 14, 21, 31 EMA shall continue serving as the dynamic support to KLCI. Provided that the KLCI is still supported by the ascending EMA, outlook for the KLCI shall remained bullish. (Study A)

As pointed by B, total market volume on Friday almost unchanged, with around 570 million shares. As volume continue to stay above the 40 days VMA (Volume Moving Average), it suggests that the market participation is relatively active. Therefore, if the volume could remained higher than the 40 days VMA level, the up trend of the KLCI is likely to continue. (Study B)

Stochastic remained above the 70% bullish region suggested that the market movement for the short-term is bullish. The short-term bullishness is expected to continue provided that the Stochastic could maintain its position above the 70% level. (Study C)