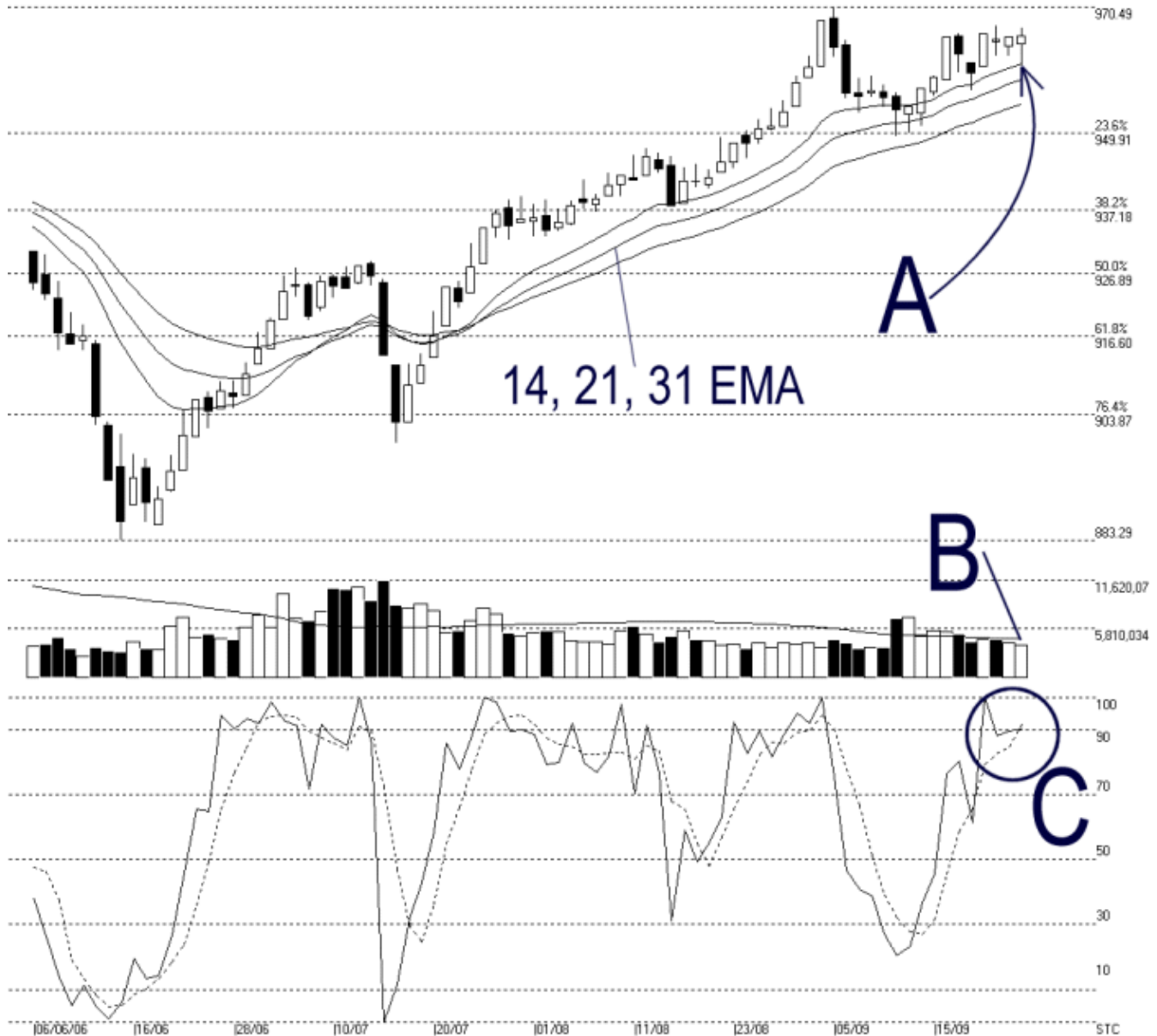




Straits Index (M) Sdn Bhd.
WinChart Technical Analysis
Tel: (03) 8941 6828
Fax: (03) 8941 9828
email: info@straitsindex.com

Open:964.420 High:966.990 Low:960.860 Close:965.660 +0.220(0.0%) Volume:3,897,682 (-182822,-4.5%)
COMPOSITE INDEX [COMPOSITE] 06/06/2006 - 26/09/2006 Ticks=80 Moving Averages e(14,21,31) - Volume Daily
Created with WinChart (TM) Copyright (C) Straits Index (M) Sdn Bhd



Composite Index Daily Technical Analysis, 26/09/2006, by Straits Index (M) Sdn Bhd

As indicated by A, the KLCI rebounded precisely at the 14 days EMA dynamic support on Tuesday after touching its daily low at 960.86 points. Therefore, the 14, 21, 31 EMA is still the dynamic support to the KLCI, while the 970.49 is still the over-head resistance. Since the KLCI is still supported by the 14, 21, 31 EMA, there are no bearish signals at the moment.

As pointed by B, total market volume for the day declined another 4.5%, while failing to meet the 40 days VMA (Volume Moving Average) level. This again suggested that the market was relatively quiet or lack of interest. Lower volume also implied a low fresh capital inflow and therefore, the market generally would not be strong without higher volume. (Study B)

Both %K and %D lines of the Stochastic are still situated above the 70% region, which is the short-term bullish region. Despite the uncertainty of the market movement, Stochastic still suggested that the short-term sentiment is still on the positive side. (Study C)