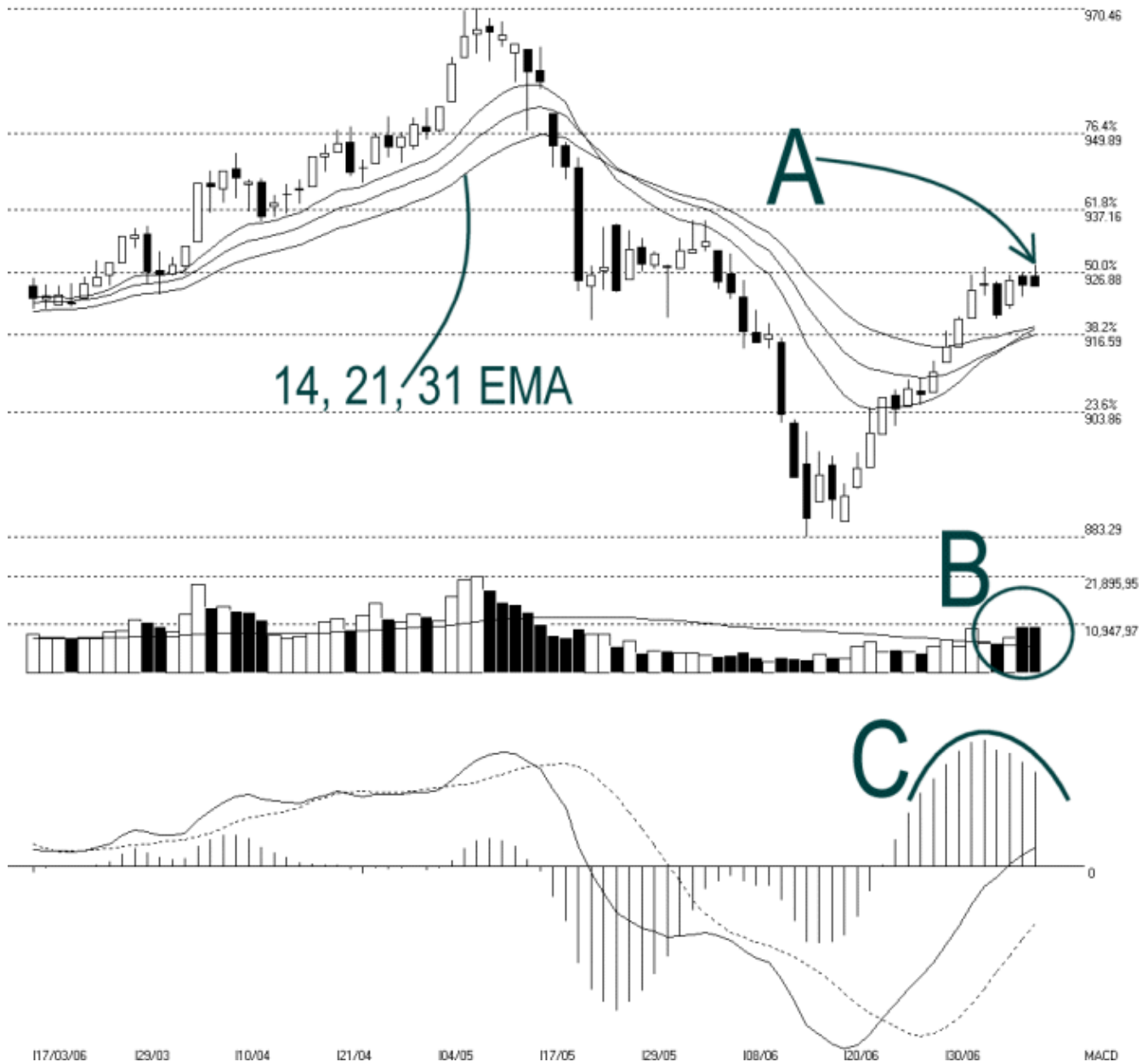




Straits Index (M) Sdn Bhd.
 WinChart Technical Analysis
 Tel: (03) 8941 6828
 Fax: (03) 8941 9828
 email: info@straitsindex.com

Open:926.310 High:928.050 Low:924.600 Close:924.600 -0.260(0.0%) Volume:10,577,530 (-60510,-0.6%)
 COMPOSITE INDEX [COMPOSITE] 17/03/2006 - 11/07/2006 Ticks=80 Moving Averages e(14,21,31) - Volume Daily
 Created with WinChart (TM) Copyright (C) Straits Index (M) Sdn Bhd



Composite Index Daily Technical Analysis, 11/07/2006, by Straits Index (M) Sdn Bhd

Despite the early gain, the KLCI failed to break out from the 926.88 Fibonacci Retracement resistance successfully, ended the day losing marginally. As pointed by A, 926.88 Fibonacci Retracement remained as the immediate resistance to the KLCI while the gradually rising 14, 21, 31 EMA are serving as the dynamic support together with the 916.59 Fibonacci Retracement. (Study A)

Total market volume on Tuesday stood at around 1.05 billion shares. As you might have known, price changes represent the conflict between bullish buyer and bearish sellers, while the volume depicts the intensity of the conflict. In this case, with relatively high volume on Tuesday, the KLCI remained resisted by the resistance, which suggested a relatively strong intensity at this resistance level, thus reinforced this resistance. (Study B)

MACD histogram round top signal remained intact on Tuesday, suggested that the consolidation of the KLCI has not ended yet. However, based on the MACD, no bearish signal has been triggered at the moment. As soon as the histogram started rising again, it shall signal an end to the consolidation and the bullish signal shall regain its strength. (Study C)